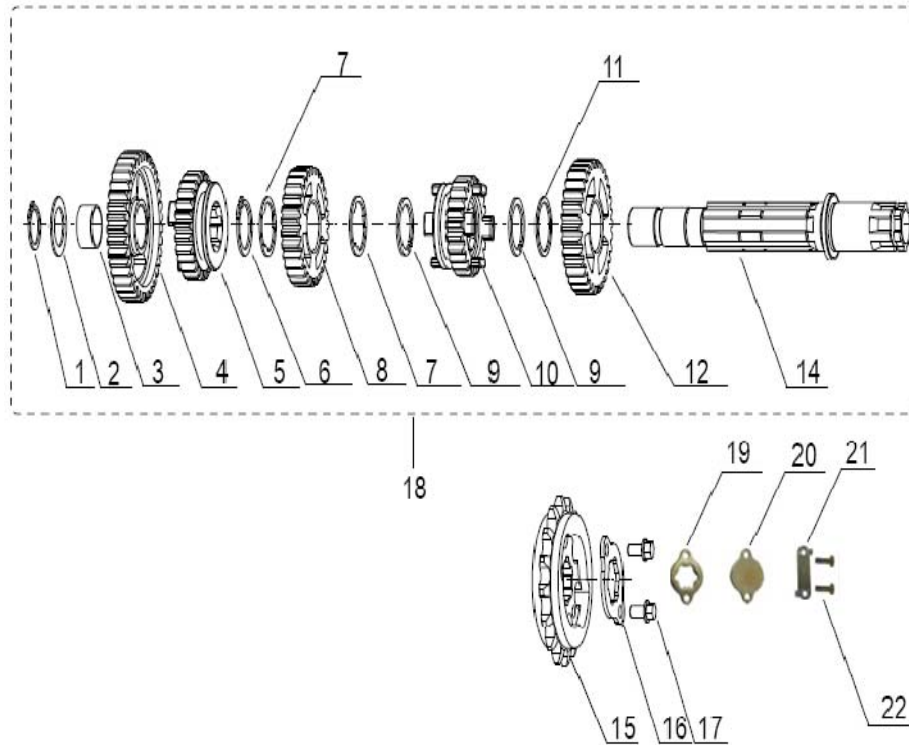
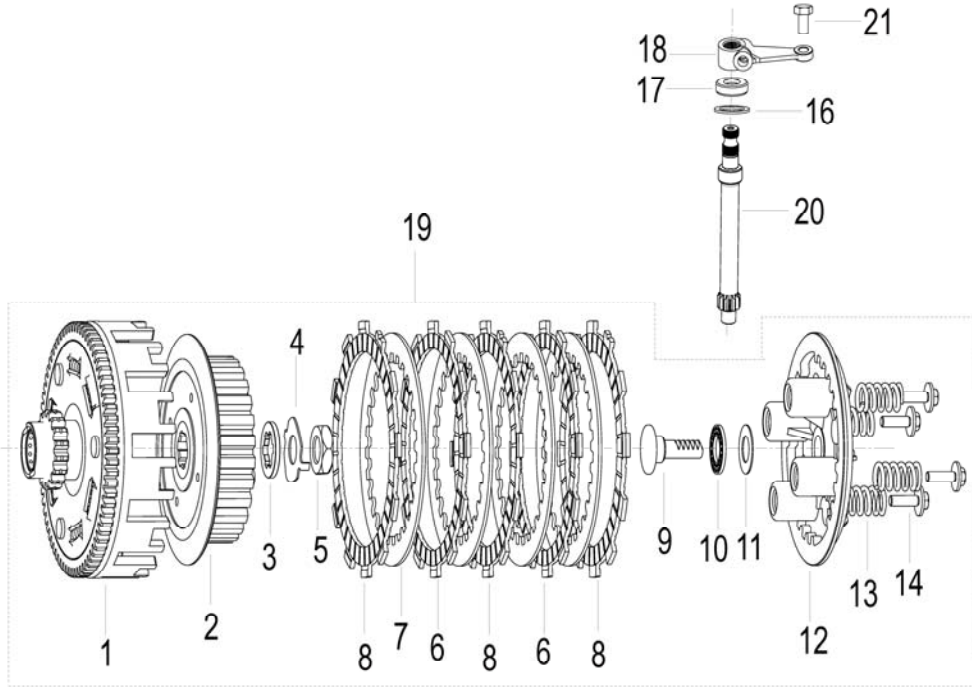


**E01.2V49FM.12A副轴分总成：输出链轮正常型**  
**COUNTERSHAFT ASSY**



NO.	Position No.	CODE	CN DESCRIPTION	EN DESCRIPTION	Qty/Unit
1	E01-1	B08010002000	挡圈20	CIRCLIP	1
2	E01-2	17307N04F000	垫圈	WASHER	1
3	E01-3	17306N04F000	衬套	BUSH	1
4	E01-4	17305N04F000	副轴一档齿轮	GEAR, 1st driven	1
5	E01-5	17312N04F000	副轴四档齿轮	GEAR, 4st driven	1
6	E01-6	B08010002500	挡圈25	CIRCLIP	1
7	E01-7	17310N04F000	垫圈	WASHER	2
8	E01-8	17311N04F000	副轴三档齿轮	GEAR, 3rd driven	1
9	E01-9	17346N04F000	挡圈	CIRCLIP	2
10	E01-10	17320N04F000	副轴五档齿轮	GEAR, 5th driven	1
11	E01-11	17348N04F000	垫圈	WASHER	1
12	E01-12	17309N04F000	副轴二档齿轮	GEAR, 2nd driven	1
14	E01-14	17303N04F000	副轴	SHAFT , DRIVEN	1
15	E01-15	17340N04F000	输出链轮组件	SPROCKET ASSY	1
16	E01-16	17344N04F940	链轮锁紧垫片	WASHER, lock	1
17	E01-17	B01030601663	六角头螺栓M6x16	BOLT	2
18	E01-18	209102.014000	副轴总成	DRIVEN SHAFT , ASSY	1
19	E01-19	210365040000	链轮盖板	CAP , SPROCKET	1
20	E01-20	210355040000	副轴盖板	CAP , OIL PUMP	1
21	E01-21	210345040000	放松垫片	GASKET	1

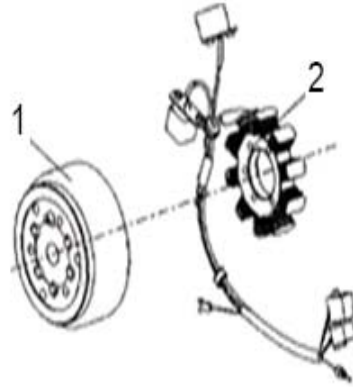
E02.2V49FM.11B离合器部件CLUCTH ASSY



NO.	Position No.	CODE	CN DESCRIPTION	EN DESCRIPTION	Qty/Unit
1	E02-1	24400N04F000	离合器主动毂组件	HUB, primary drive	1
2	E02-2	24500N04F000	离合器从动毂组件	HUB, clutch sleeve	1
3	E02-3	24616N04F000	花键垫圈	WASHER, spline	1
4	E02-4	24615N04F930	止动垫片	STOP WASHER (20-GB11253-89)	1
5	E02-5	24607N04F930	锁紧螺母M16X1.6	NUT M16X1.6	1
6	E02.6	20032504000A	摩擦片 (I) ( FCC )	PLATE FRICTION	2
7	E02-7	24708N04F000	离合器片	PRESSURE PLATE	4
8	E02-8	200115040000	摩擦片 (II) ( FCC )	PLATE FRICTION	3
9	E02-9	200225040000	离合器齿条	RACK	1
10	E02-10	200123090000	平面滚针轴承	NEEDLE BEARING	1
11	E02-11	B1203M152800	推力垫圈	WASHER	1
12	E02-12	24503N04F000	离合器从动毂座	HUBSEAT	1
13	E02-13	24611N04F930	离合器弹簧	SPRING	4
14	E02-14	24507N04F000	螺栓组合件	BOLT (M6x20)	4
16	E02-16	120183070000	气门内弹簧垫圈	WASHER	1
17	E02-17	200023090000	转臂轴油封	SEAL	1
18	E02-18	209073090000	分离杠杆	DISENGAGING LEVEL	1
19	E02-19	209005040011	离合器总成 ( FCC摩擦片 )	CLUTCH ASSY	1
20	E02-20	200215040000	离合器拉杆齿轮	PULL ROAD,CLUTCH	1
21	E02-21	B0101060162L	螺栓M6x16	BOLT (M6X16)	1

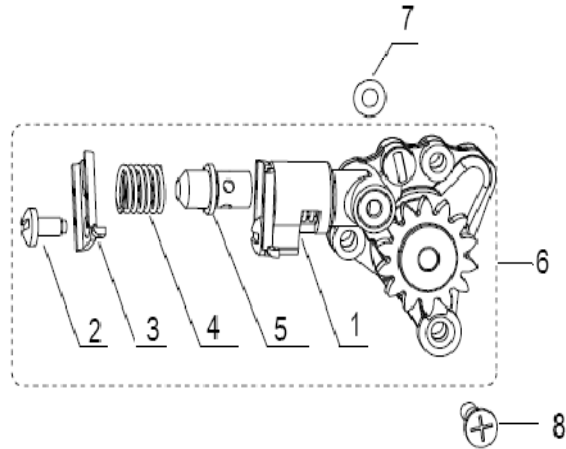
E03.2V49FM.15B磁电机部件：带防水插件

MAGNETO ASSY



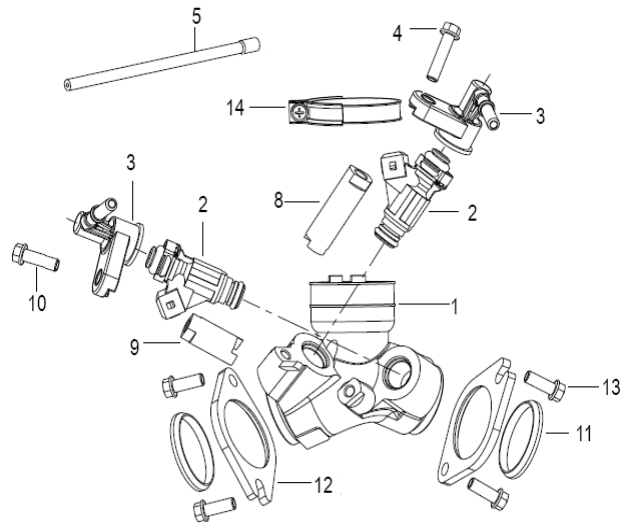
NO.	Position No.	CODE	CN DESCRIPTION	EN DESCRIPTION	Qty/Unit
1	E03-1	299025130000	飞轮组合	FLY WHEEL ASSY	1
2	E03-2	299035040000	定子组合	COIL ASSY STATOR	1

E04.2V49FM.10A机油泵部件OIL PUMP ASSY



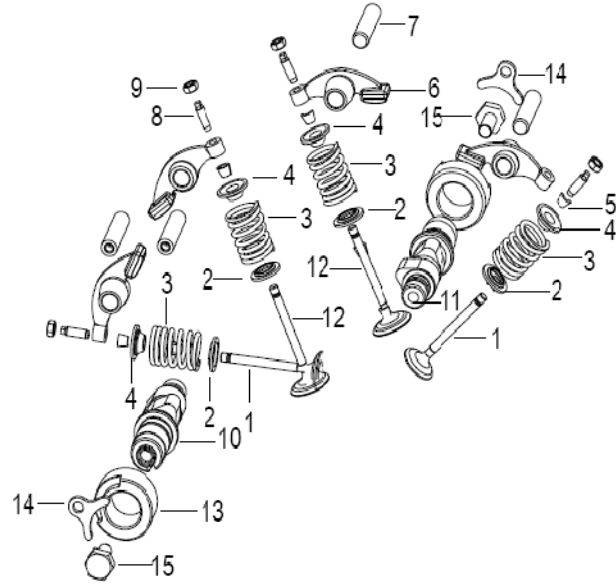
NO.	Position No.	CODE	CN DESCRIPTION	EN DESCRIPTION	Qty/Unit
1	E04-1	219100.040000	机油泵组件	ASSY,oil pump	1
2	E04-2	B02040601063	螺钉 M6X10	SCREW ( M6X10 )	1
3	E04-3	19301N04F910	压板	PLATE	1
4	E04-4	19302N04F930	机油泵减压弹簧	SPRING	1
5	E04-5	19303N04F000	减压阀	VALVE,decompress	1
6	E04-6	19000N04F000	机油泵总成	OIL PUMP ASSY	1
7	E04-7	260055040000	O型圈	O SEAL RING	1
8	E04-8	B02010602523	平头螺栓6X25	SCREW 6X25	1

**E05.进气管分总成 ( DELPHI电喷用 )**  
**INTAKE PIPE ASSY**



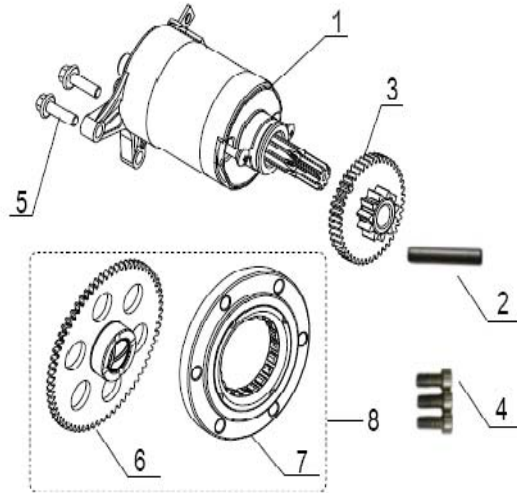
NO.	Position No.	CODE	CN DESCRIPTION	EN DESCRIPTION	Qty/Unit
1	E05-1	119015040031	进气管组件 ( 电喷用)	PIPE ASSY , intake	1
2	E05-2	289023160000	喷油器	OIL ATOMIZER	2
3	E05-3	289045130000	喷油器座组件	BASE,OIL ATOMIZER	2
4	E05-4	B01070606064	六角法兰面螺栓M6x60	BOLT M6x60	1
5	E05-5	110075130000	MAP管	PIPE,MAP	1
8	E05-8	110035130000	隔套I	SPACER I	1
9	E05-9	110045130000	隔套II	SPACER II	1
10	E05-10	B01070604564	六角法兰面螺栓M6x45	BOLT M6x45	1
11	E05-11	110025040000	密封圈	SEAL RING	2
12	E05-12	110065130000	进气口法兰	FLANGE	2
13	E05-13	B01070601664	六角法兰面螺栓M6x16	BOLT M6x16	4
14	E05-14	202104.005472	卡箍组件	CLAMP ASSY	1

**E06.2V49FM.07A凸轮轴配气机构部件**  
**INTAKE & EXHAUST MECHANISM**



NO.	Position No.	CODE	CN DESCRIPTION	EN DESCRIPTION	Qty/Unit
1	E06-1	129195040030	排气门	VALVE, EXHAUST	2
2	E06-2	30106N04F000	气门弹簧下座	GASKET, VALVE SPRING	4
3	E06-3	129255040010	气门弹簧	SPRING, VALVE	4
4	E06-4	129335040000	气门弹簧上座	RETAINER, VALVE SPRING	4
5	E06-5	129223230000	气门锁夹	COTTER, VALVE	8
6	E06-6	30123N04F000	摇臂组件	ARM, VALVE ROCKER	4
7	E06-7	30121N04F000	摇臂轴	SHAFT, VALVE ROCKER	4
8	E06-8	30303H03F000	气门间隙调整螺钉	SCREW, ADJUSTING	4
9	E06-9	30302H03F930	气门间隙调整螺母	NUT, ADJUSTING	4
10	E06-10	129075040010	凸轮轴 ( I )	CAMSHAFT( I )	1
11	E06-11	129085040000	凸轮轴 ( II )	CAMSHAFT( II )	1
12	E06-12	129185040000	进气门	VALVE, INTAKE	2
13	E06-13	30423N04F000	凸轮轴轴承座	SEAT, CAMSHAFT	2
14	E06-14	30417N04F000	凸轮轴压板	PLATE, CAMSHAFT	2
15	E06-15	B02040601262	螺钉M6X12	SCREW	2

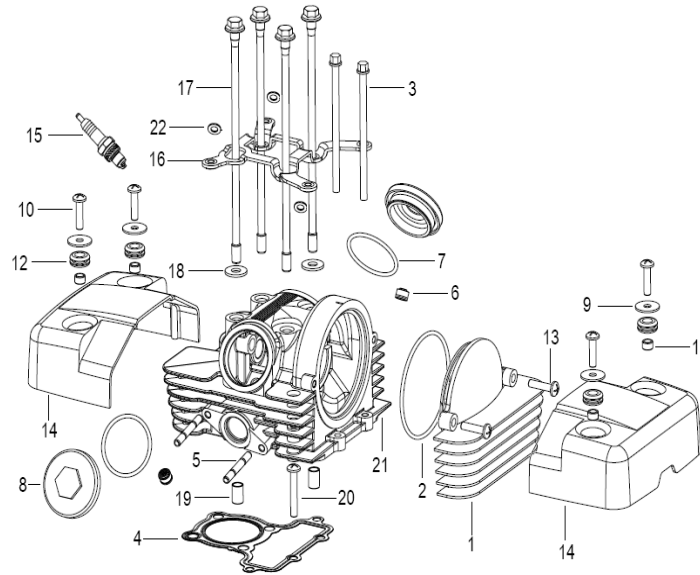
**E07.2V49FM.06B启动离合器部件**  
**STARTING CLUTCH ASSY**



NO.	Position No.	CODE	CN DESCRIPTION	EN DESCRIPTION	Qty/Unit
1	E07-1	218100.015082	启动电机组件(白漆)	STARTING MOTOR ASSY.(PAINTED WHITE)	1
2	E07-2	34146N04F000	启动惰齿轮轴	SHAFT, starting gear	1
3	E07-3	34140N04F000	启动惰轮组件	GEAR COMP, starting idle	1
4	E07-4	B02040801862	螺钉M8X18	SCREW	3
5	E07-5	B02040602562	螺钉M6X25	SCREW	2
6	E07-6	34150N04F000	启动大齿轮组件	BIG GEAR COMP, starting	1
7	E07-7	34400N04F000	密排式离合器组件	CLUTCH COMP	1
8	E07-8	217100.018082	超越离合器组件	EXCEED CLUTCH ASSY	1

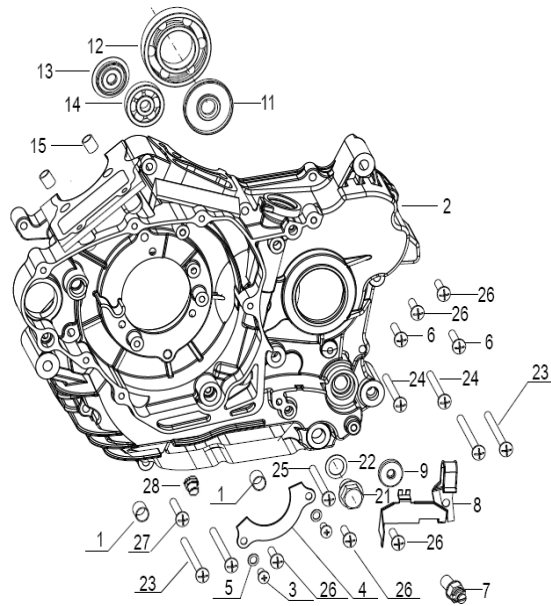
## E08. ( 2V49FM.01(I)K ) 气缸盖组件(I)

### CYLINDER HEAD ASSY



NO.	Position No.	CODE	CN DESCRIPTION	EN DESCRIPTION	Qty/Unit
1	E08-1	201301.004082	汽缸盖侧盖(白漆)	RIGHT COVER, cylinder head	1
2	E08-2	30505N04F000	O 型密封圈82.5x3	O RING ( 82.5x3 )	1
3	E08-3	B01070611064	螺钉M6X110	SCREW ( M6X110 )	2
4	E08-4	100025040030	汽缸盖垫片组件(石墨黑)	GASKET, head cover	1
5	E08-5	201216.001472	双头螺栓6x43	STUD BOLT ( 6x43 )	2
6	E08-6	30240N04F000	气门杆密封组件	SEAL COMP, valve	2
7	E08-7	30116N04F000	O型密封圈	O RING ( 45X3 )	2
8	E08-8	201326.003082	检查孔盖	OBSERVE COVER	2
9	E08-9	30112N04F940	垫片	WASHER	4
10	E08-10	B01070602064	螺栓M6X20	SCREW ( M6X20 )	4
11	E08-11	30534N04F910	中心套管	CONDUIT	4
12	E08-12	30111N04F000	密封垫	GASKET, seal	4
13	E08-13	B01070602564	螺钉M6X25	SCREW ( M6X25 )	2
14	E08-14	201300.018082	汽缸盖罩盖	HEAD COVER COMP	2
15	E08-15	299075040001	火花塞组件	SPARK PLUG	1
16	E08-16	30320N04F910	固定架焊接组件	FIXTURE	1
17	E08-17	201313.006472	汽缸盖螺栓	MOUNT	4
18	E08-18	30515N04F000	垫片	FLAT WASHER 20X8.5X2 ( T3M2 GB	1
19	E08-19	26208J01F000	定位销	PIN,POWER	2
20	E08-20	B01070604064	螺钉M6X40	SCREW ( M6X40 )	2
21	E08-21	109055040090	汽缸盖机械加工组件(喷白漆)	CLINDER HEAD COMP,WHITE	1
22	E08-22	26117J01F000	O型圈6.8X1.9	O RING ( 6.8X1.9 )	3

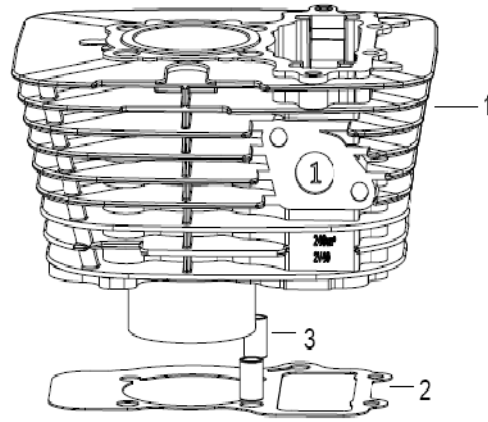
**E09.2V49FM.03C 左曲轴箱分总成LEFT CRANKCASE ASSY**



NO.	Position No.	CODE	CN DESCRIPTION	EN DESCRIPTION	Qty/Unit
1	E09-1	26123G02F000	定位销12X20	PIN DOWEL	2
2	E09-2	26110N04F000	左曲轴箱组件(喷白漆)	LEFT CRANKCASE COMP WHITE	1
3	E09-3	B01030601263	螺栓M6X12	BOLT	2
4	E09-4	26113N04F000	挡链板	CHAINPLATE	2
5	E09-5	307991002230	垫圈I	WASHER I	2
6	E09-6	301310603065	螺栓M6X30	SCREW	2
7	E09-7	219071170000	空挡位传感器组件	SENCOR,neutral switch	1
8	E09-8	26603N04F940	线夹II	CLAMP II	1
9	E09-9	26133N04F000	油封I	OIL SEAL I	1
11	E09-11	26130N04F000	油封II	OIL SEAL II	1
12	E09-12	B12016630550	轴承D305	BEARING	1
13	E09-13	26129N04F000	油封III	OIL SEAL III	1
14	E09-14	B12016610350	轴承D103	BEARING	1
15	E09-15	26123G02F000	定位套	PIN,dowel	4
21	E09-21	26144N04F000	螺塞	PLUG	1
22	E09-22	26145N04F000	密封垫圈	WASHER	1
23	E09-23	301310608065	螺栓M6X80	SCREW	4
24	E09-24	301310607065	螺栓M6X70	SCREW	2
25	E09-25	301310604065	螺栓M6X40	SCREW	1
26	E09-26	301310602565	螺栓M6X25	SCREW	4
27	E09-27	301310606365	螺栓M6X63	SCREW	2
28	E09-28	200335040000	离合器拉杆堵头	STOPPER	1

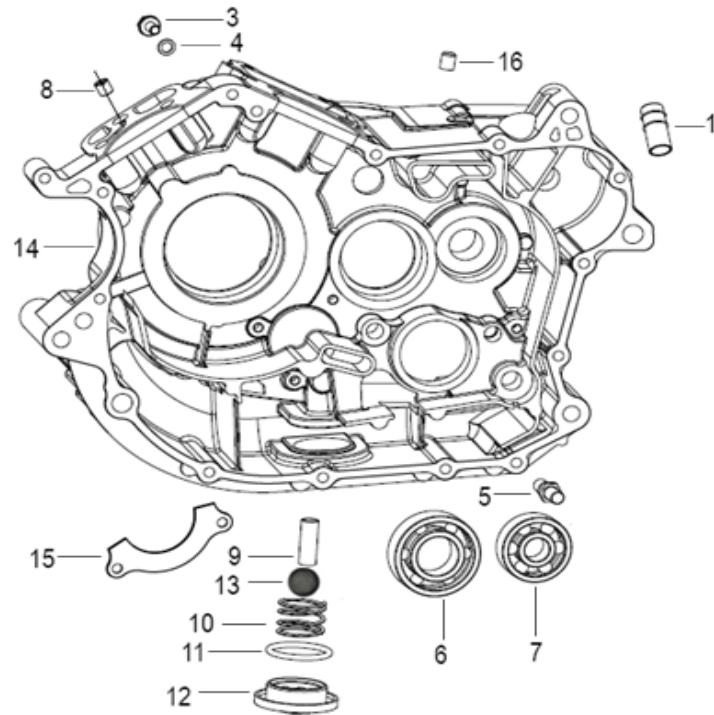


E10. ( 2V49FM.02(I)B ) 气缸体部件(I)石墨黑  
CYLINDER ASSY



NO.	Position No.	CODE	CN DESCRIPTION	EN DESCRIPTION	Qty/Unit
1	E10-1	139015040000	气缸体机械加工组件(I)(喷白漆)	CYLINDER ASSY,WHITE	1
2	E10-2	27102N04F000	气缸体垫片	GASKET,cylinder	1
3	E10-3	26208J01F000	定位套	PIN,POWEL	2

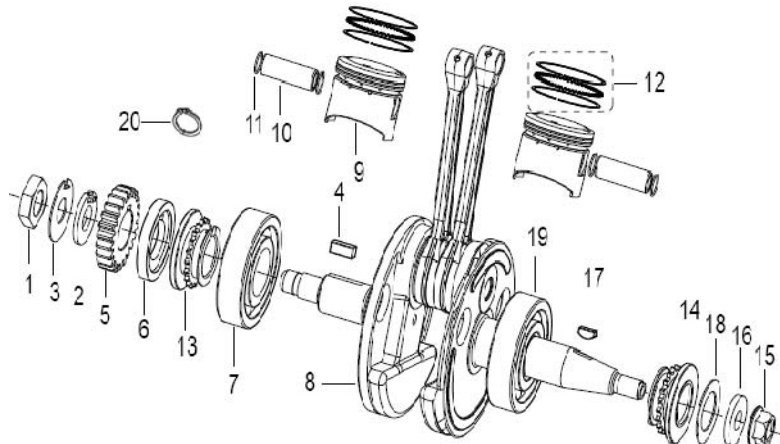
**E11. ( 2V49FM.03.01.02C ) 右曲轴箱分总成 ( 石墨黑 )**  
**RIGHT CRANKCASE ASSY**



NO.	Position No.	CODE	CN DESCRIPTION	EN DESCRIPTION	Qty/Unit
1	E11-1	26401N04F940	管接	PIPE,link	1
3	E11-3	B0109060146A	六角法兰面螺栓	BOLT,oil pressure indication	1
4	E11-4	26216N04F940	垫圈II	WASHER II	1
5	E11-5	26208N04F930	定位销	PIN	1
6	E11-6	B12016620550	轴承D205	BEARING	1
7	E11-7	B12016610450	轴承D104	BEARING	1
8	E11-8	26228N04F000	限油螺塞	PLUG,oil limiting	2
9	E11-9	26321N04F000	吸油管	OIL PIPE,soak oil	1
10	E11-10	26305N04F930	弹簧	SPRING	1
11	E11-11	26307N04F000	O型圈II	O RING II	1
12	E11-12	206211.004082	放油螺塞	DRAIN PLUG	1
13	E11-13	26300N03F000	滤网组件	FILTER WEB	1
14	E11-14	26210N04F000	右曲轴箱组件(喷白漆)	RIGHT CRANKCASE COMP WHITE	1
15	E11-15	26113N04F000	挡链板	CHAIN PLATE	1
16	E11-16	26207N04F000	堵头	BOLT	1

E12.2V49FM.05A曲轴连杆机构部件

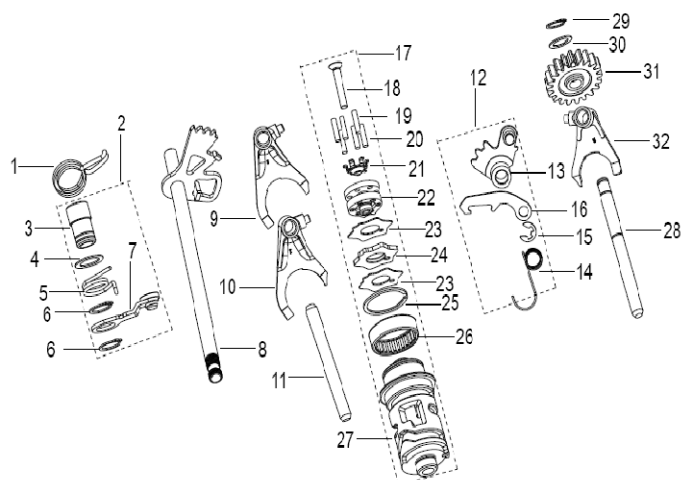
CRANKSHAFT,CONNECTING ROD,PISTON ASSY



NO.	Position No.	CODE	CN DESCRIPTION	EN DESCRIPTION	Qty/Unit
1	E12-1	15230N04F000	曲轴紧定螺母	LOCK NUT	1
2	E12-2	15233N04F930	垫片(I)	WASHER (20-GB710-88)	1
3	E12-3	15234N04F000	垫片(II)	WASHER (35-GB710-88)	1
4	E12-4	15116N04F000	键	KEY	1
5	E12-5	15207N04F000	曲轴齿轮	GEAR	1
6	E12-6	15117N04F000	链轮压板	PLATE, CHAIN	1
7	E12-7	B12016630653	轴承D306	BEARING	1
8	E12-8	15200N04F000	曲柄连杆组件	CRANKSHAFT COMP	1
9	E12-9	179135040020	活塞	PISTON	2
10	E12-10	15105N04FF10	活塞销	PIN, PISTON	2
11	E12-11	15106N04F930	活塞销挡圈	CIRCLIP	4
12	E12-12	15120N04F000	活塞环组件	RING ASSY.	2
13	E12-13	15232N04F000	曲轴正时链轮 ( I )	SPROCKET,C/SHAFT TIMING( I )	1
14	E12-14	15238N04F000	曲轴正时链轮 ( II )	SPROCKET,C/SHAFT TIMING(II)	1
15	E12-15	15228H03F000	螺母M12X1.2	NUT(M12X1.2)	1
16	E12-16	15209N04F920	垫圈31X12.5X4	WASHER (31X12.5X4)	1
17	E12-17	15101N03F000	键	KEY	1
18	E12-18	34122N04F000	垫圈40X25.3X1	WASHER (40X25.3X1)	1
19	E12-19	B12016630653	轴承D306	BEARING	1
20	E12-20	15212N04F000	挡圈	CIRCLIP	3

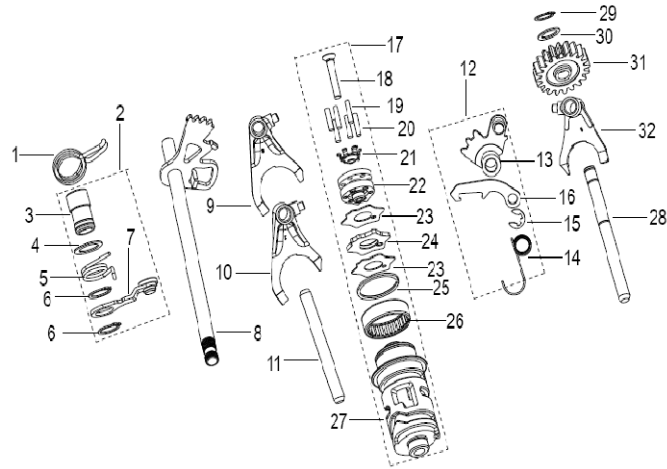
## E13.2V49FM.13A变档机构部件

## GEAR SHIFT MECHANISM



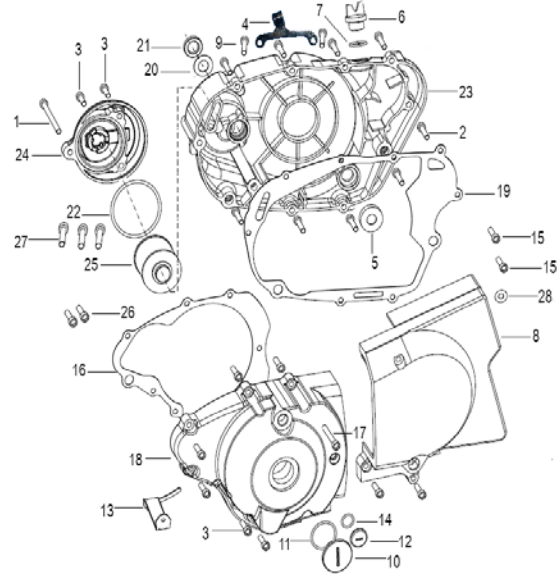
NO.	Position No.	CODE	CN DESCRIPTION	EN DESCRIPTION	Qty/Unit
1	E13-1	17701N04F000	回位弹簧	SPRING	1
2	E13-2	17515N04F000	止动器杆组件	STOPPER ASSY	1
3	E13-3	17516N04F000	轴套	AXLE SET	1
4	E13-4	17517N04F930	垫圈	WASHER	1
5	E13-5	17518N04F930	止动器扭簧	SPRING	1
6	E13-6	B08010001700	挡圈17	CIRCLIP	2
7	E13-7	17514N04F000	止动器杆分组件	STOPPER	1
8	E13-8	17703N04F000	换档轴组件	SHAFT	1
9	E13-9	17614N04F940	拨叉III	FORKIII	1
10	E13-10	17616N04F940	拨叉I	FORKI	1
11	E13-11	17617N04F000	拨叉轴I	SHAFTI, shift fork	1
12	E13-12	17415N04F000	换档爪组件	CLAW ASSY	1
13	E13-13	17417N04F000	换档扇形齿轮II	GEARII	1
14	E13-14	17418N04F930	扭簧	SPRING	1
15	E13-15	17442N04F920	开口挡圈	CIRCLIP	1
16	E13-16	17713N04F000	换档爪	CLAW	1
17	E13-17	17600N04F000	换档鼓组件	CAM ASSY	1
18	E13-18	B02010503563	螺钉M5x35	BOLT	1
19	E13-19	17601N04F000	滚针P4x29.8	PIN	1
20	E13-20	17618N04F000	滚针P4x17.8	PIN P4x17.8	5
21	E13-21	17624N04F000	弹簧垫圈	SPRING WASHER	1
22	E13-22	17625N04F000	换档支架	KICKSTAND	1
23	E13-23	17603N04F920	换档鼓扇形板垫片	WASHER	2
24	E13-24	17602N04F000	换档鼓扇形板	PLATE	1
25	E13-25	17626N04F930	卡簧	CIRCLIP	1
26	E13-26	17623N04F000	滚针轴承	NEEDLE BEARING	1
27	E13-27	17604N04F000	换档鼓	CAM, gear shift	1

**E13.2V49FM.13A变档机构部件**  
**GEAR SHIFT MECHANISM**



NO.	Position No.	CODE	CN DESCRIPTION	EN DESCRIPTION	Qty/Unit
28	E13-28	17621N04F000	拨叉轴II	SHAFTII, shift fork	1
29	E13-29	B08010001000	挡圈10	CIRCLIP	3
30	E13-30	30300N04F000	垫圈	WASHER	2
31	E13-31	19117N04F000	机油泵惰齿轮	GEAR	1
32	E13-32	17615N04F940	拨叉II	FORKII	1

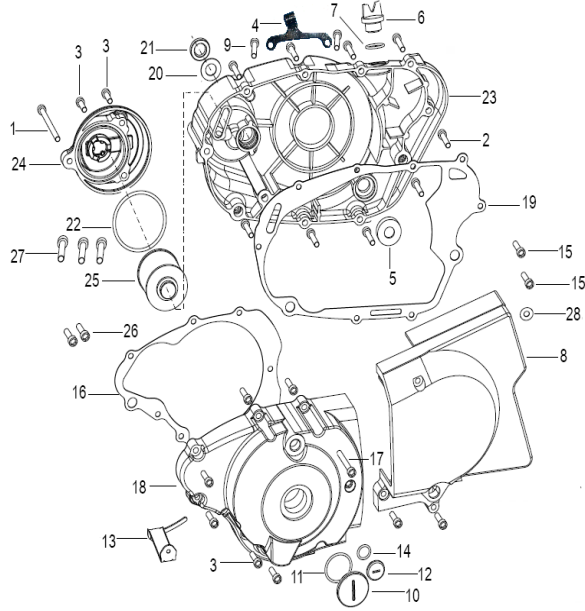
**E14.2V49FM.04C曲轴箱盖部件 ( 滤清器KEEWAY )**  
**CLUTCH COVER ASSY**



NO.	Position No.	CODE	CN DESCRIPTION	EN DESCRIPTION	Qty/Unit
1	E14-1	301310609065	螺钉M6X90	SCREW	1
2	E14-2	301310603565	螺钉M6X35	SCREW	9
3	E14-3	301310602565	螺钉M6X25	SCREW	6
4	E14-4	200195040000	离合器钢索支架 ( 配新离合器 )	BRACKET,right crankcase cover	1
5	E14-5	160083090000	油面指示器组合	OIL LEVEL INDICATOR ASSY	1
6	E14-6	207305.006472	加油孔盖	PLUG	1
7	E14-7	14208N04F000	O型密封圈20×2.2	O RING	1
8	E14-8	207201.026472	曲轴箱左后盖 ( 镀铬 )	COVER,SPROCKET,CHROMEPLATE	1
9	E14-9	301310602865	螺钉M6X28	SCREW	2
10	E14-10	207204.006472	曲轴观察孔盖	PLUG,cover magneto	1
11	E14-11	14116H03F000	O型密封圈14×2.2	O RING	1
12	E14-12	207205.001472	正时观察孔盖	PLUG	1
13	E14-13	207213.005472	压线板	PLATE	1
14	E14-14	14115N04F000	O型密封圈30.8×3.2	O RING	1
15	E14-15	B01050601064	螺钉M6X10	SCREW	2
16	E14-16	14230N04F000	左盖板垫片	GASKET,magneto cover	1
17	E14-17	B01070607064	螺钉M6X70	SCREW	1
18	E14-18	207200.043472	曲轴箱左前盖	Cover,magneto	1
19	E14-19	14229N04F000	右盖板垫片	GASKET,sprccket cover	1
20	E14-20	B08000002500	挡圈25	CIRCLIP	1
21	E14-21	14221N04F000	油封14×25.5×5.5	OIL SEAL	1
22	E14-22	B190106300C0	O型密封圈63X3.55	O RING	1

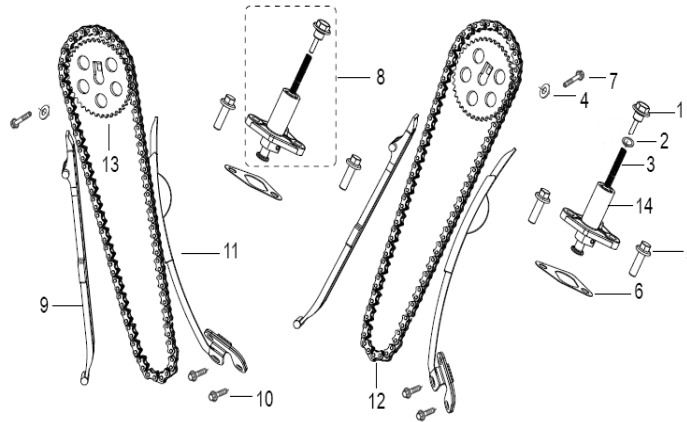
**E14.2V49FM.04C曲轴箱盖部件 ( 滤清器KEEWAY )**

**CLUTCH COVER ASSY**



NO.	Position No.	CODE	CN DESCRIPTION	EN DESCRIPTION	Qty/Unit
23	E14-23	169105040001	曲轴箱右盖	CLUTCH COVER	1
24	E14-24	207308.007472	滤清器罩盖 ( KEEWAY)	CAP,strainer mark KEEWAY	1
25	E14-25	26308N04F000	机油滤芯组件	STAINER	1
26	E14-26	34345J01F000	螺钉M5X14	SCREW M5X14	2
27	E14-27	B02040603023	螺钉M6X30	SCREW M6X30	3
28	E14-28	30351J01F000	垫圈6	WASHER	1

## E15.2V49FM.08B 正时链及张紧机构部件TIMING CHAIN & TENSIONER ASSY

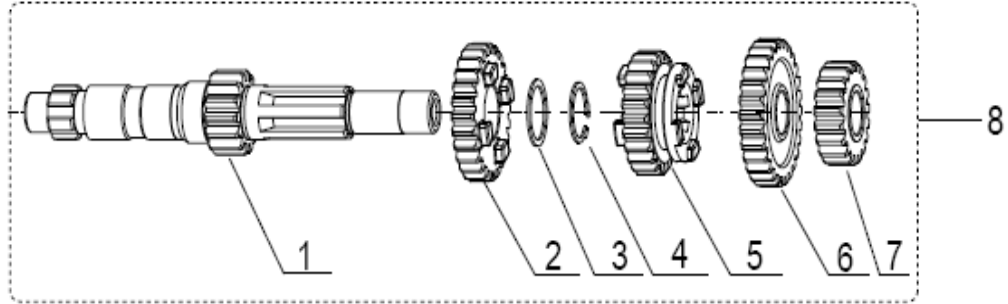


NO.	Position No.	CODE	CN DESCRIPTION	EN DESCRIPTION	Qty/Unit
1	E15-1	27450B08F000	螺栓分组件	BOLT	2
2	E15-2	27302N03F000	O型圈	O RING	2
3	E15-3	27305N03F000	弹簧 ( 1 )	SPRING ( 1 )	2
4	E15-4	27304N04F000	链轮联接螺栓用垫片	WASHER 19.5X8.2X2	2
5	E15-5	B01070601864	螺钉M6X18	SCREW(M6X18)	4
6	E15-6	27304N03F000	垫片	GASKET	2
7	E15-7	27328N04F930	链轮联接螺栓	BOLT (M8X21.5)	2
8	E15-8	149035050030	张紧器组件(喷白漆)	TENSIONER COMP.WHITE	2
9	E15-9	27440N04F000	副导链板组件	GUIDE CHAIN PLATE	2
10	E15-10	B02040601262	螺钉M6X12	SCREW(M6X12)	4
11	E15-11	27430N04F000	主导链板联接组件	GUIDE CHAIN PLATE	2
12	E15-12	27321N04F000	正时链条	TIMING CHAIN	2
13	E15-13	30404N04F000	凸轮轴正时链轮	TIMING CHAIN SPROCKET BIG	2
14	E15-14	140081140010	张紧器座组件	SET TENSIONER ASSY	2



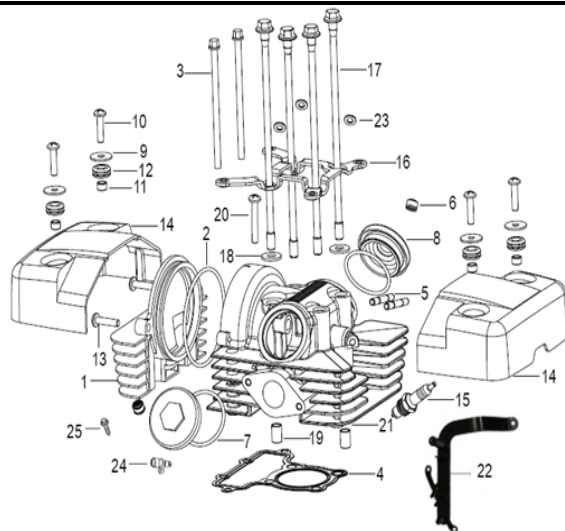
E16.2V49FM.12C主轴分总成

PRINCIPAL AXLE ASSY



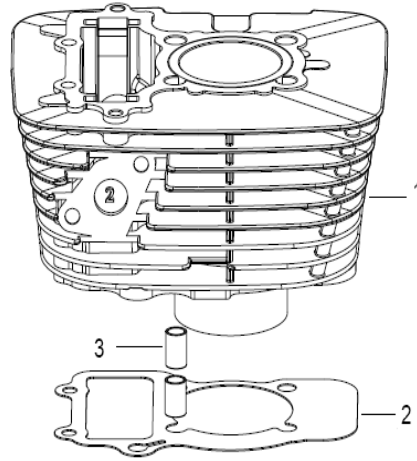
NO.	Position No.	CODE	CN DESCRIPTION	EN DESCRIPTION	Qty/Unit
1	E16-1	219145040000	主轴	SHAFT , DRIVEN	1
2	E16-2	17205N04F000	主轴四档齿轮	GEAR, 4th drive	1
3	E16-3	17223N04F000	垫圈	WASHER	1
4	E16-4	17224N04F930	挡圈	CIRCLIP	1
5	E16-5	17204N04F000	主轴三档齿轮	GEAR, 3rd drive	1
6	E16-6	17206N04F000	主轴五档齿轮	GEAR, 5th drive	1
7	E16-7	17202N04F000	主轴二档齿轮	GEAR, 2nd drive	1
8	E16-8	219135040000	主轴总成	DRIVEN SHAFT ASSY	1

**E17. ( 2V49.01(II)H ) 气缸盖部件(II)**  
**CYLINDER HEAD ASSY**



NO.	Position No.	CODE	CN DESCRIPTION	EN DESCRIPTION	Qty/Unit
1	E17-1	201301.004082	汽缸盖侧盖(白漆)	RIGHT COVER, CYLINDER HEAD,WHITE	1
2	E17-2	30505N04F000	O 型密封圈82.5x3	O RING	1
3	E17-3	10002305002X	螺钉M6X110	SCREW	2
4	E17-4	30503N04F000	汽缸盖垫片组件	GASKET, head cover black	1
5	E17-5	201216.001472	双头螺栓6x43	STUD BOLT	2
6	E17-6	30240N04F000	气门焊密封组件	SEAL COMP, valve	2
7	E17-7	30116N04F000	O型密封圈	O RING	2
8	E17-8	201326.003081	检查孔盖	OBSERVE COVER	2
9	E17-9	30112N04F940	垫片	WASHER	4
10	E17-10	B01070602064	螺栓M6X20	SCREW	4
11	E17-11	30534N04F910	中心套管	CONDUIT	4
12	E17-12	30111N04F000	密封垫	GASKET,seal	4
13	E17-13	B01070602564	螺钉M6X25	SCREW	2
14	E17-14	201300.018081	汽缸盖罩盖	HEAD COVER COMP	2
15	E17-15	299075040001	火花塞组件	SPARK PLUG	1
16	E17-16	30320N04F910	固定架焊接组件	FIXTURE	1
17	E17-17	201313.006472	汽缸盖螺栓	MOUNT	4
18	E17-18	30515N04F000	垫片	WASHER	1
19	E17-19	26208J01F000	定位销	PIN, DOWEL	2
20	E17-20	B01070604064	螺钉M6X40	SCREW	2
21	E17-21	109055040043	汽缸盖机械加工组件(喷白漆)	CLINDER HEAD,WHITE	1
22	E17-22	05310N0JP000	装饰盖支架	SUSPENDER COMP	1
23	E17-23	26117J01F000	O型圈6.8X1.9	O RING	3
24	E17-24	100015130000	缸头温度传感器	SENSOR,TEMPERATURE	1
25	E17-25	B01070501264	六角法兰面螺栓M5x12	BOLT M5x12	1

E18. ( 2V49.02(II)A ) 气缸体部件(II)  
CYLINDER ASSY



NO.	Position No.	CODE	CN DESCRIPTION	EN DESCRIPTION	Qty/Unit
1	E18-1	139015040020	气缸体机械加工组件(II)(喷白漆)	CYLINDER MACHINING ASSY ,WHITE	1
2	E18-2	27102N04F000	气缸体垫片	GASKET,cylinder	1
3	E18-3	26208J01F000	定位套	PIN,POWEL	2