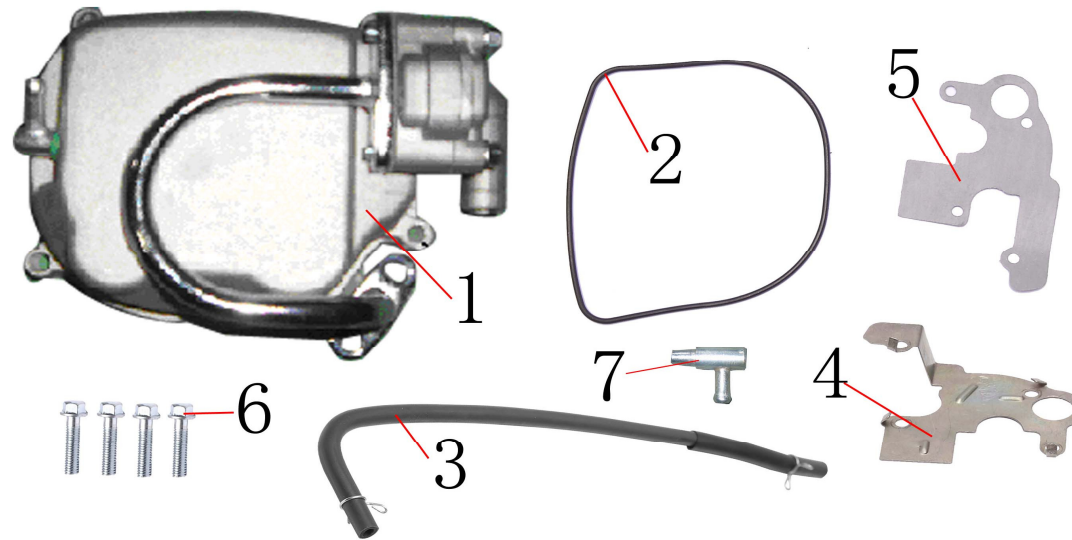
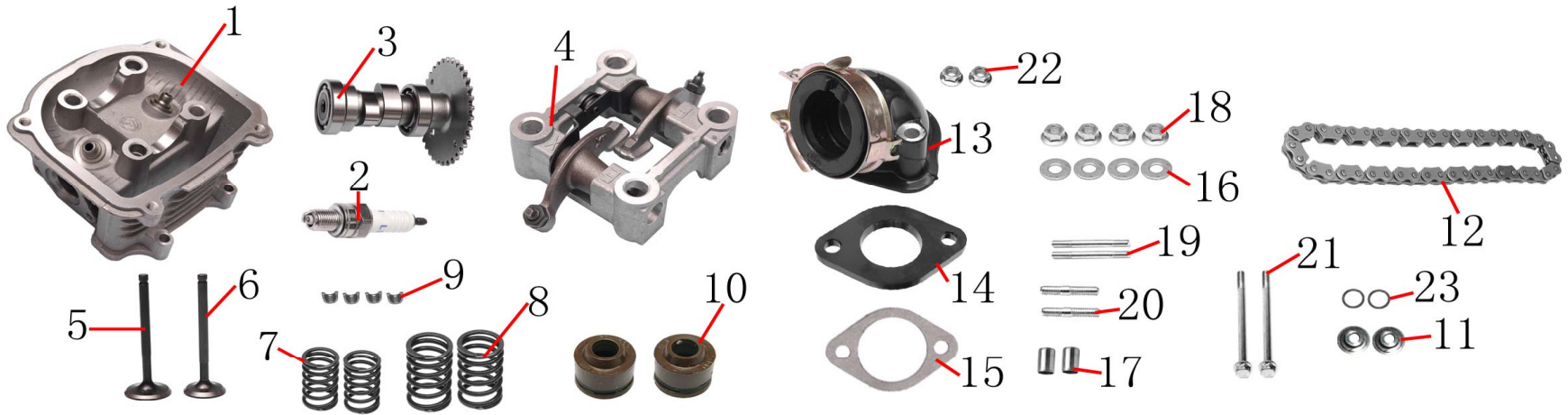


E-1 CYLINDER HEAD



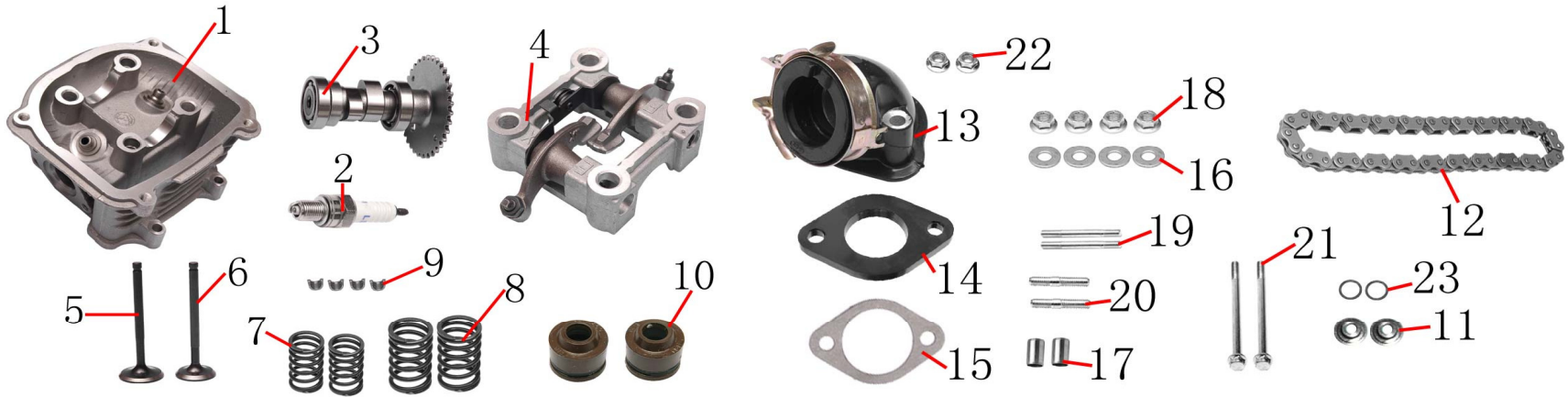
NO.	PART NO.	NAME	Q'ty	REMARK
1	152QMI-01-0001	Cylinder head cover	1	
2	152QMI-01-0002	Seal,cylinder head cover	1	
3	152QMI-01-0003	Intake pipe	1	
4	152QMI-01-0004	Pressure plate,breather	1	
5	152QMI-01-0005	Paper washer,presure plate,breather	1	
6	152QMI-01-0006	Hexagon bolt M6x25	4	
7	152QMI-01-0007	intake valve	1	

E-2 CYLINDER HEAD



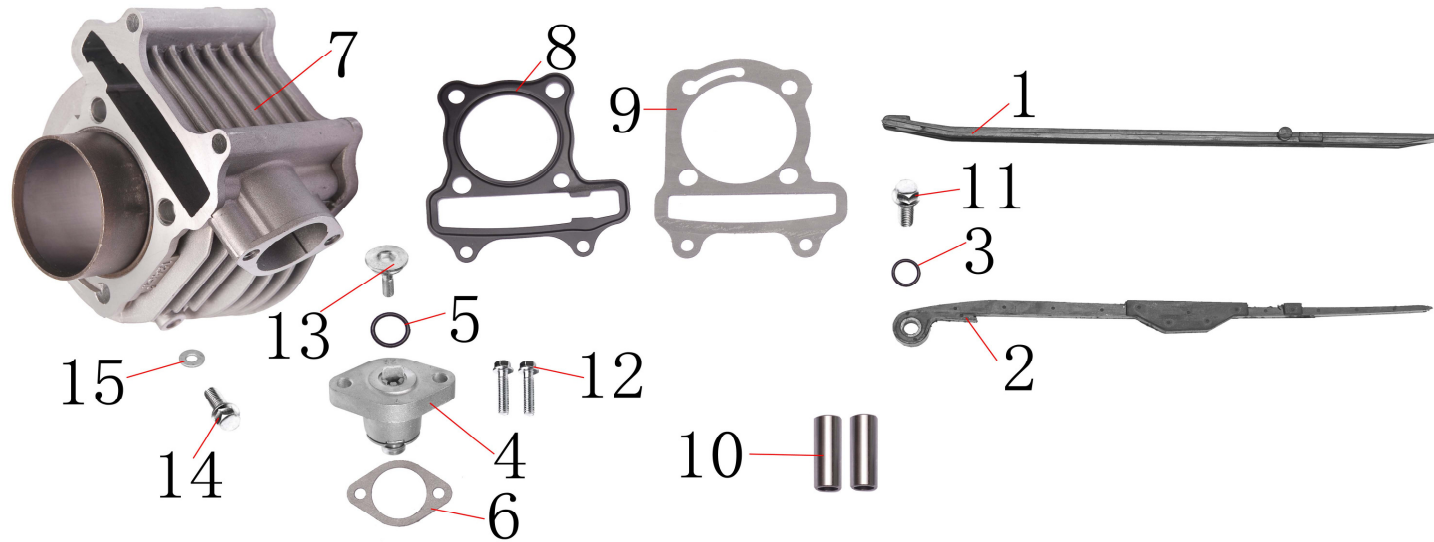
NO.	PART NO.	NAME	Q'ty	REMARK
1	157QMJ-02-0001	Cylinder head	1	
2	152QMI-02-0002	Spark plug	1	NGK3.68
3	152QMI-02-0003	Camshaft	1	
4	152QMI-02-0004	Rocker holder assy, valve	1	
5	157QMJ-02-0005	Inlet valve	1	
6	157QMJ-02-0006	Exhaust valve	1	
7	152QMI-02-0007	Inner spring, valve	2	
8	152QMI-02-0008	Outer spring, valve	2	
9	152QMI-02-0009	Clip	4	

E-2 CYLINDER HEAD



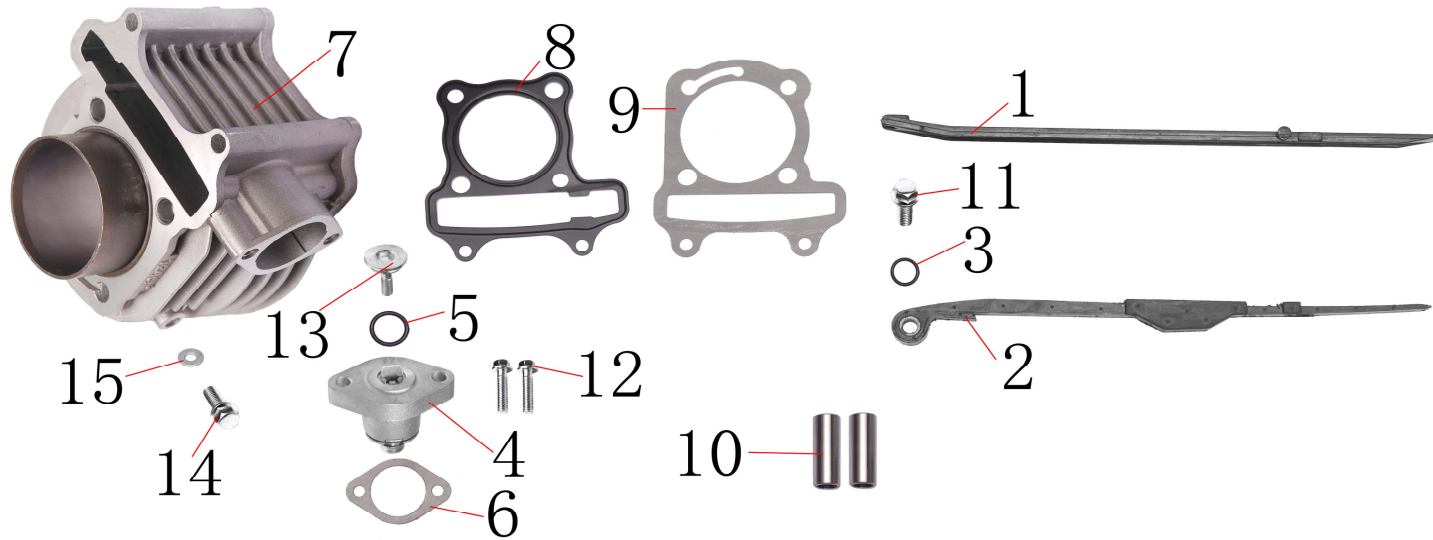
NO.	PART NO.	ENGLISH NAME	Q'ty	REMARK
13	152QMI-02-0013	Inlet pipe	1	
14	152QMI-02-0014	insulator	1	
15	152QMI-02-0015	Washer, insulator	1	
16	152QMI-02-0016	Washer M8	4	
17	152QMI-02-0017	Pinφ10×16	2	
18	152QMI-02-0018	Hexagon nut M8	4	
19	152QMI-02-0019	Stud bolt M6×50	4	
20	152QMI-02-0020	Stud bolt M6x32	2	
21	152QMI-02-0021	Hexagon bolt M6x100	2	

E-3 CYLINDER ASSEMBLY



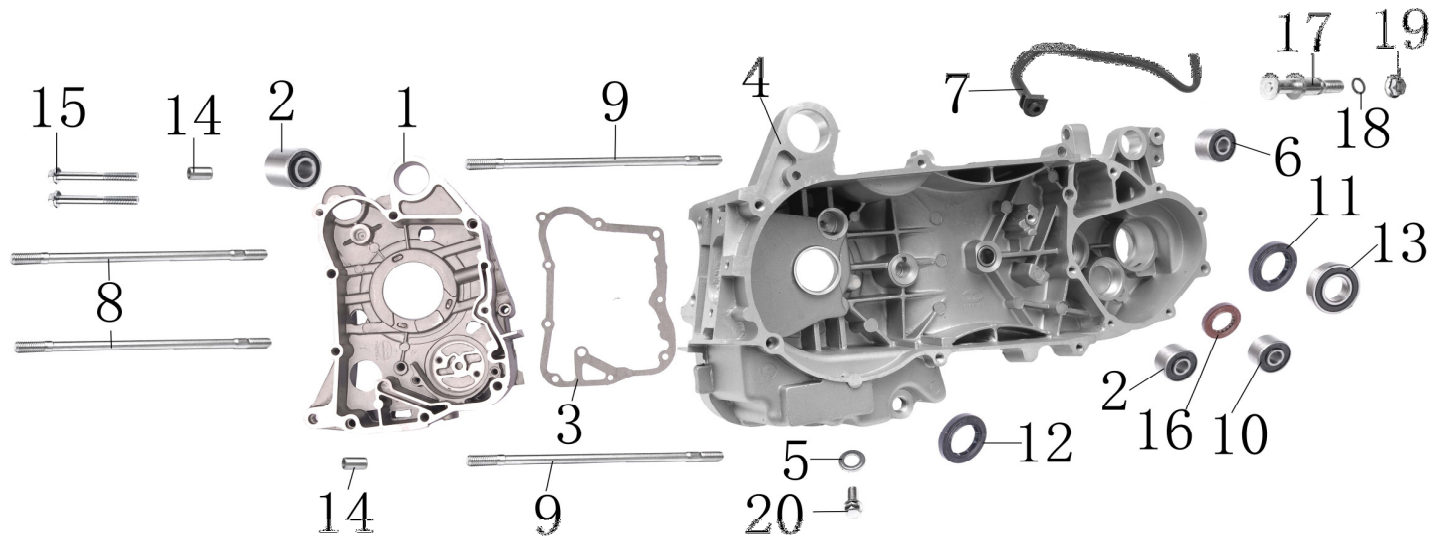
NO.	PART NO.	NAME	Q'ty	REMARK
1	152QMI-03-0001	Guider,timing chain	1	
2	152QMI-03-0002	Tension stem,timing chain	1	
3	152QMI-03-0003	O-ring φ15.2x1.5	1	
4	152QMI-03-0004	Tensioner assy	1	
5	152QMI-03-0005	O-ring φ9.5x1.5	1	
6	152QMI-03-0006	Gasket,tensioner assy	1	
7	157QMJ-03-0007	Cylinder assy	1	
8	157QMJ-03-0008	Gasket,cylinder head	1	
9	157QMJ-03-0009	Washer,cylinder	1	

E-3 CYLINDER ASSEMBLY



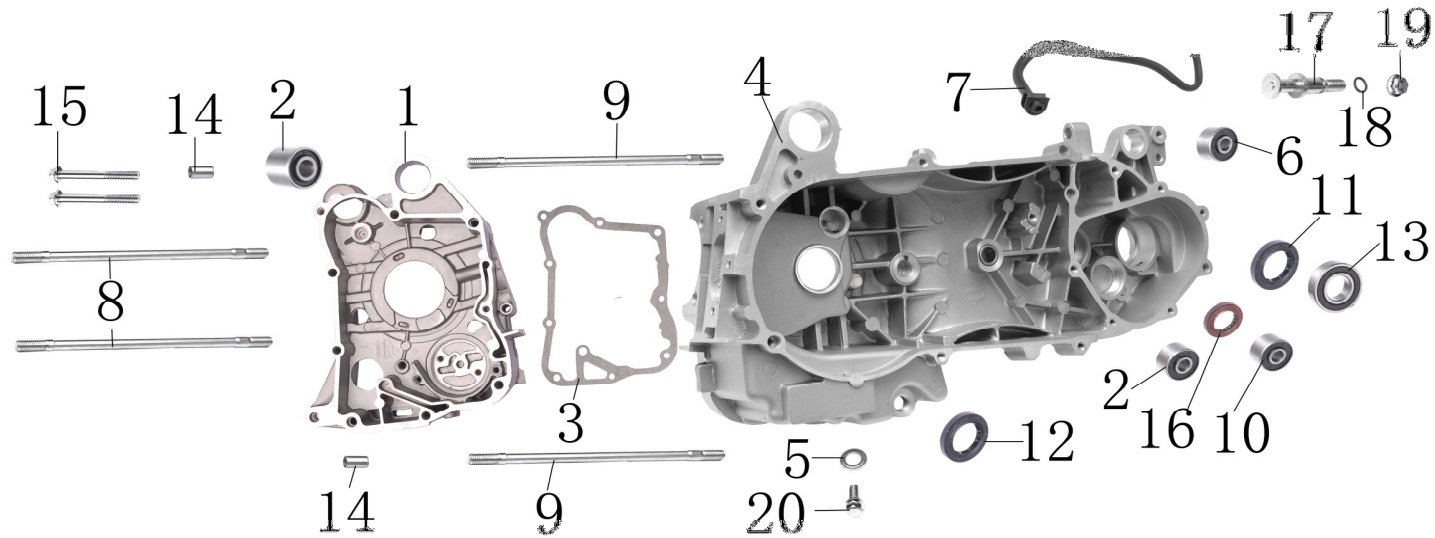
NO.	PART NO.	NAME	Q'ty	REMARK
13	152QMI-03-0013	Bolt M6x6	1	
14	152QMI-03-0014	Hexagon bolt M6x12	1	
15	152QMI-03-0015	Washer M6	1	

E-4 CRANKCASE ASSEMBLY



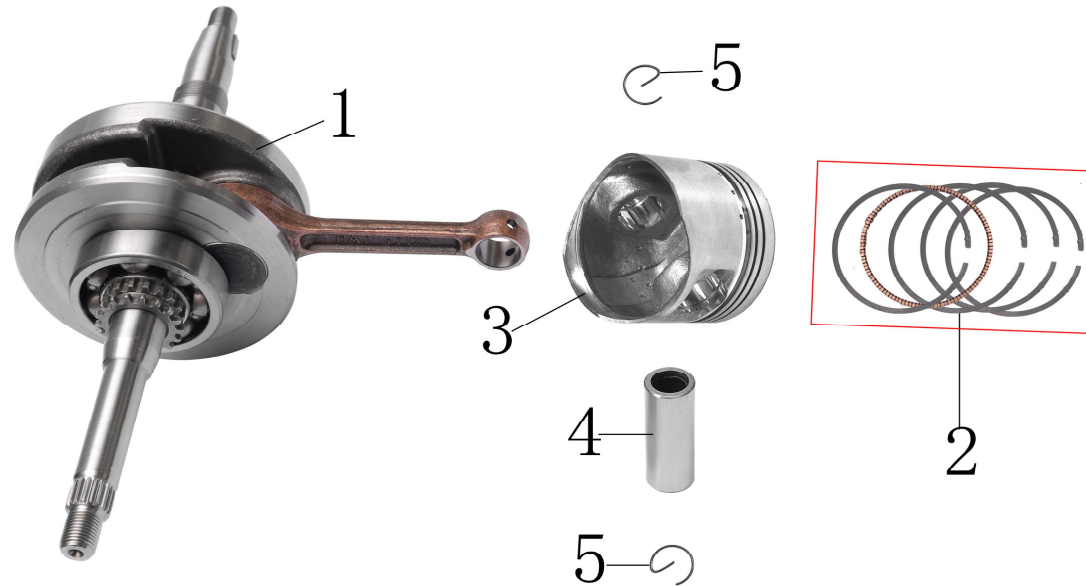
NO.	PART NO.	NAME	Q'ty	REMARK
1	157QMJ-04-0001	R. crankcase assy	1	
2	152QMI-04-0002	Bushing of engine hanger (big)	2	
3	157QMJ-04-0003	Gasket, R crankcase cover	1	
4	157QMJ-04-0004	L.crankcase assy	1	
5	152QMI-04-0005	Washer M12	1	
6	152QMI-04-0006	Buffer mass rubber (small)	1	
7	152QMI-04-0007	Vent pipe	1	
8	152QMI-04-0008	Stud bolt M8×187.5	2	
9	152QMI-04-0009	Stud bolt M8×195.5	2	

E-4 CRANKCASE ASSEMBLY



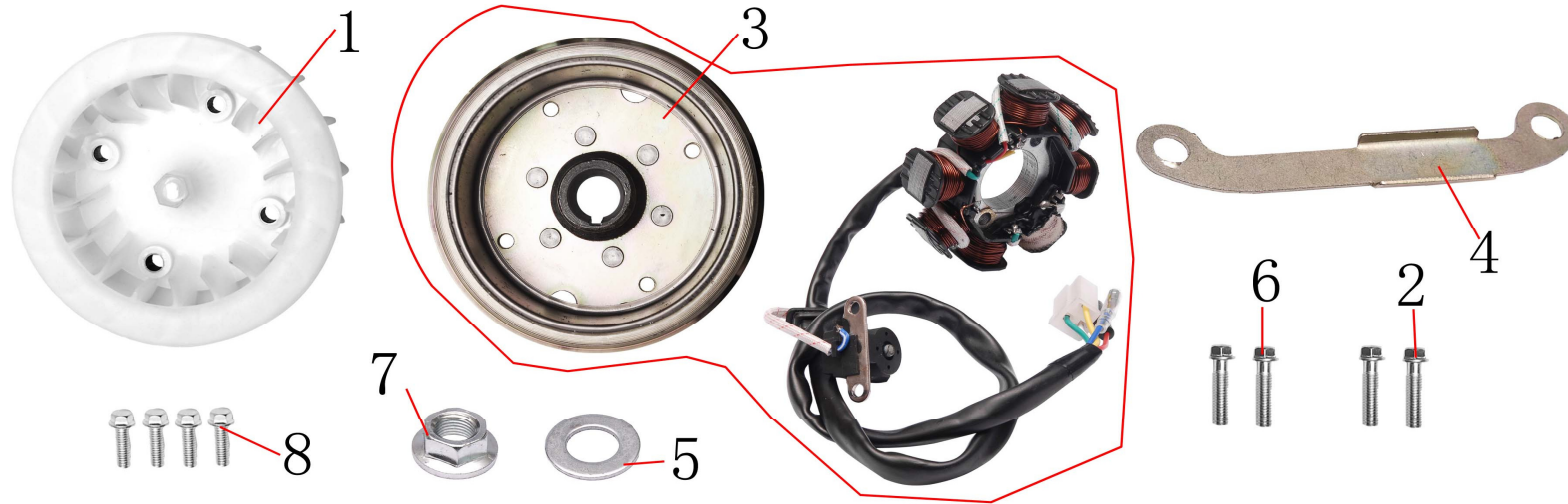
NO.	PART NO.	NAME	Q'ty	REMARK
13	152QMI-04-0013	Seal 27×42×7	1	
14	152QMI-04-0014	Pin φ8x14	1	
15	152QMI-04-0015	Hexagon bolt M6x50	1	
16	152QMI-04-0016	Bearing 6002	1	
17	152QMI-04-0017	Pin,brake shoe	1	
18	152QMI-04-0018	O-ring φ7.5x1.5	1	
19	152QMI-04-0019	Hexagon nut M8	1	
20	152QMI-04-0020	Hexagon bolt M6x1.5	1	

E-5 CRANKSHAFT



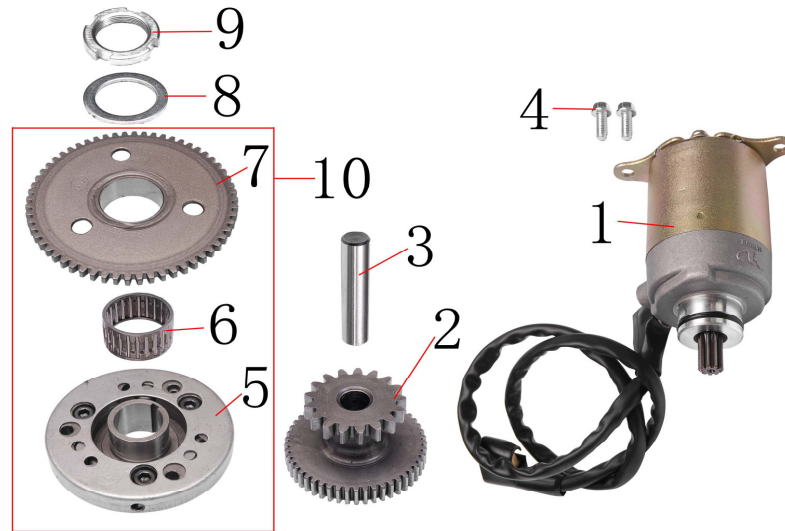
NO.	PART NO.	NAME	Q'ty	REMARK
1	152QMI-05-0001	Crankshaft assy	1	
2	157QMJ-05-0002	Piston ring	1	
3	157QMJ-05-0003	Piston	1	
4	157QMJ-05-0004	Pin,piston	1	
5	157QMJ-05-0005	Clip,pin	2	

E-6 FLYWHEEL



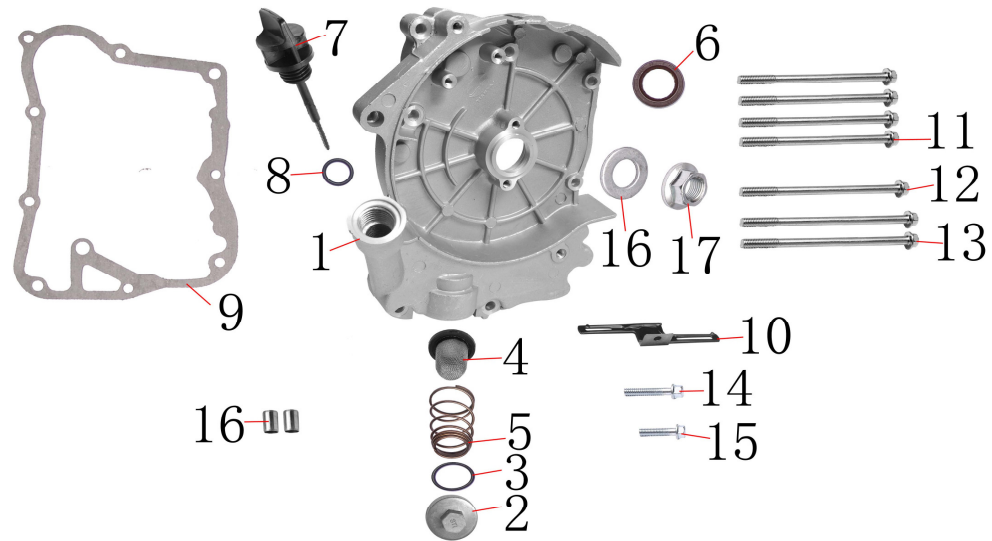
NO.	PART NO.	NAME	Q'ty	REMARK
1	152QMI-06-0001	Fan	1	
2	152QMI-06-0002	Hexagon bolt M6x20	2	
3	157QMJ-06-0003	Magneto	1	
4	152QMI-06-0004	ACG clip	1	
5	152QMI-06-0005	Washer φ12mm	1	
6	152QMI-06-0006	Hexagon bolt M5x12	2	
7	152QMI-06-0007	Hexagon nut M12	1	
8	152QMI-06-0008	Hexagon bolt M6x18	4	

E-7 STATOR MOTOR



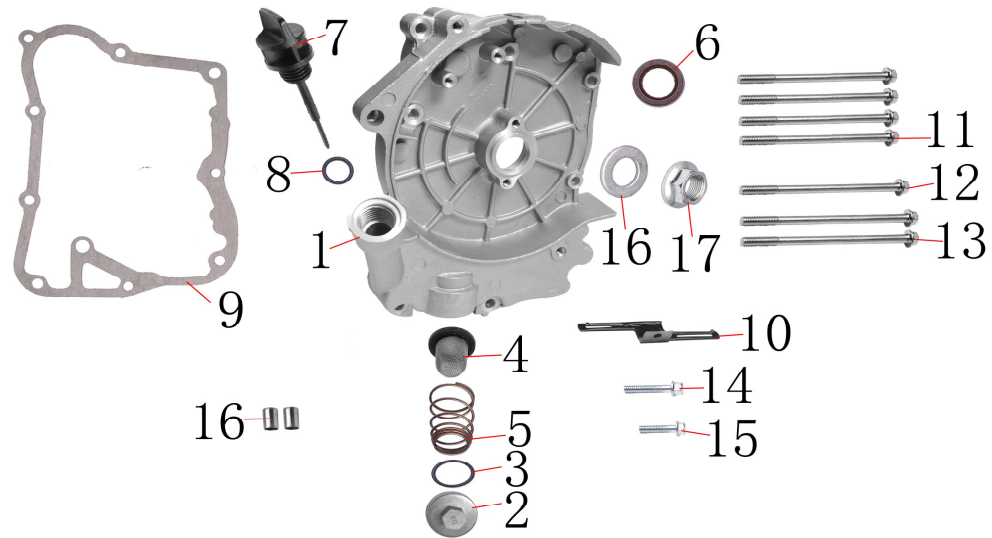
NO.	PART NO.	NAME	Q'ty	REMARK
1	152QMI-07-0001	Generator	1	
2	152QMI-07-0002	Gear, starter reduction	1	
3	152QMI-07-0003	Shaft,starter reduction gear	1	
4	152QMI-07-0004	Hexagon bolt M6x25	2	
5	152QMI-07-0005	Clutch	1	
6	152QMI-07-0006	Needle bearing	1	
7	152QMI-07-0007	Gear, clutch assy	1	
8	152QMI-07-0008	Washer 22x31x2.5	1	
9	152QMI-07-0009	Locked nut M22	1	

E-8 CRANKCASE COVER



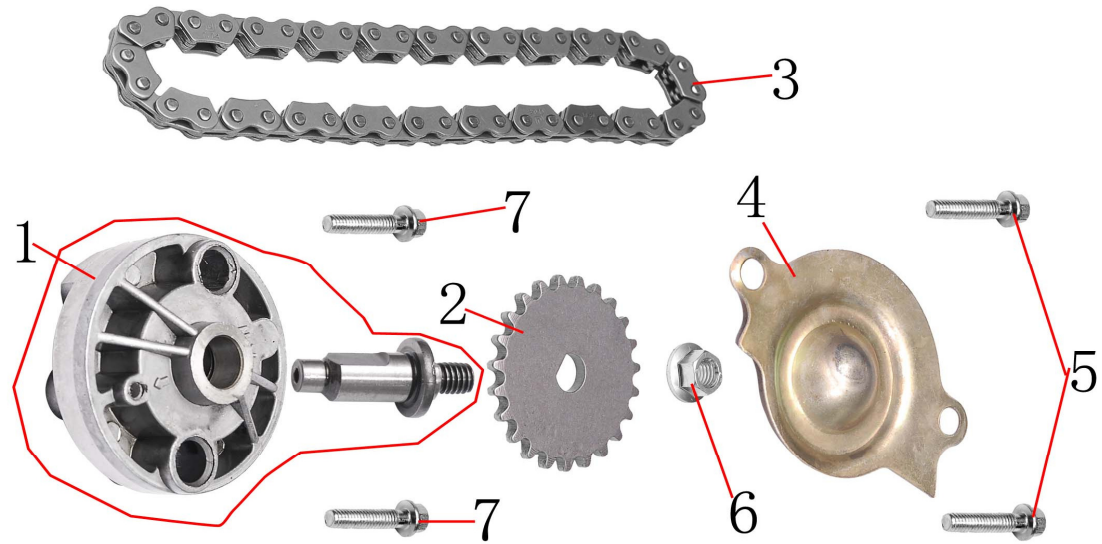
NO.	PART NO.	NAME	Q'ty	REMARK
1	152QMI-08-0001	R,crankcase cover	1	
2	152QMI-08-0002	Cover,oil filter screen	1	
3	152QMI-08-0003	O-ring $\phi 30.1 \times 3.2$	1	
4	152QMI-08-0004	Oil filter screen	1	
5	152QMI-08-0005	Mesh, oil filter	1	
6	152QMI-08-0006	Seal 19.8x30x5	1	
7	152QMI-08-0007	Oil dip stick	1	
8	152QMI-08-0008	O-ring $\phi 18 \times 3$	1	
9	152QMI-08-0009	Washer, R crankcase cover	1	

E-8 CRANKCASE COVER



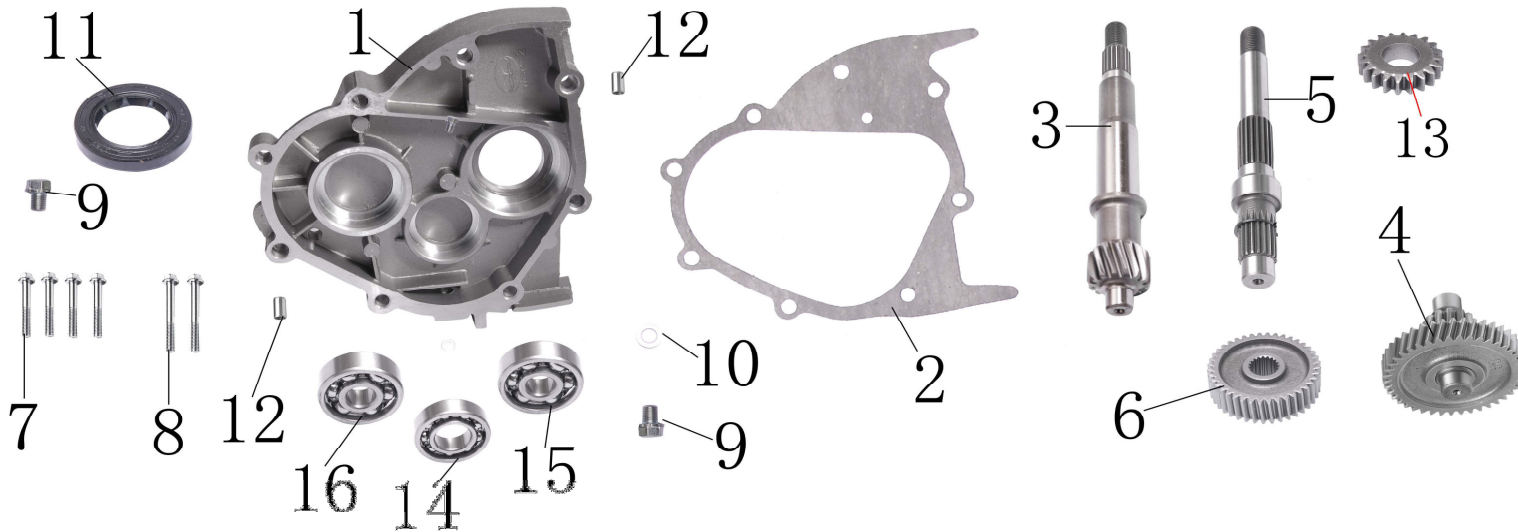
NO.	PART NO.	NAME	Q'ty	REMARK
13	152QMI-08-0013	Hexagon bolt M6x110	2	
14	152QMI-08-0014	Hexagon bolt M6x40	1	
15	152QMI-08-0015	Hexagon bolt M6x32	1	
16	152QMI-08-0016	Pin ϕ 8x14	2	

E-9 OIL PUMP



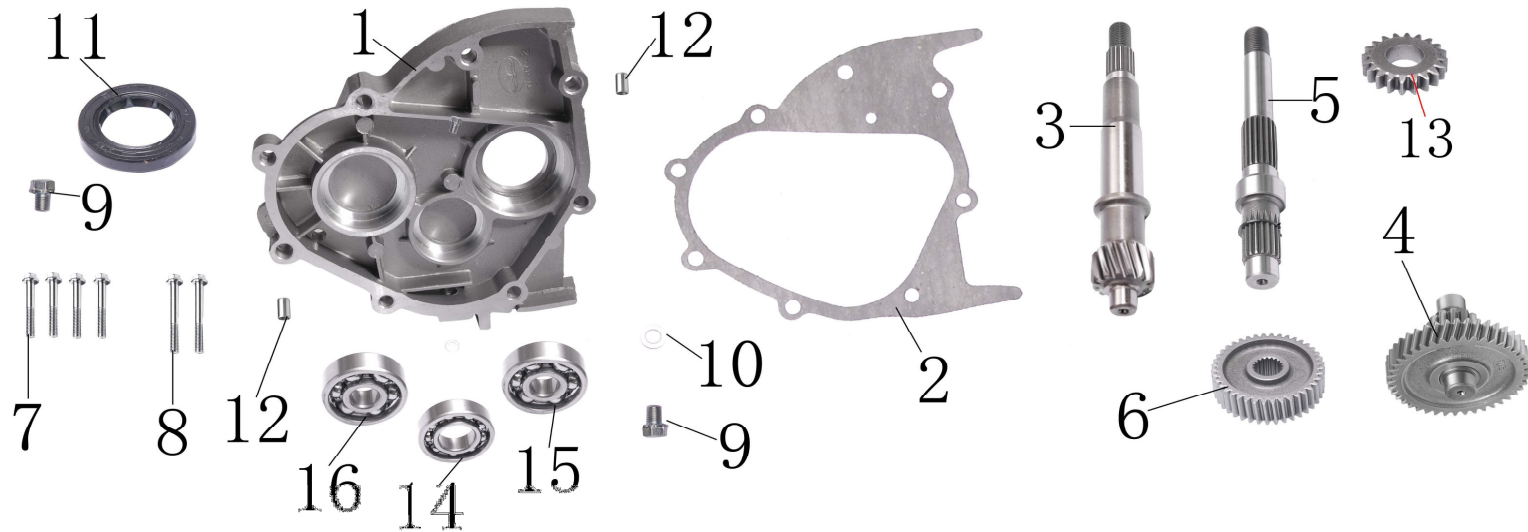
NO.	PART NO.	NAME	Q'ty	REMARK
1	157QMJ-09-0001	Oil pump	1	
2	152QMI-09-0002	Driven sprocket , oil pump	1	
3	152QMI-09-0003	Chain, oil pump	1	
4	152QMI-09-0004	Pressure plate , Oil pump	1	
5	152QMI-09-0005	Hexagon bolt M6x12	2	
6	152QMI-09-0006	Hexagon nut M6	1	
7	152QMI-09-0007	Hexagon bolt M6x25	2	

E-10 GEARBOX



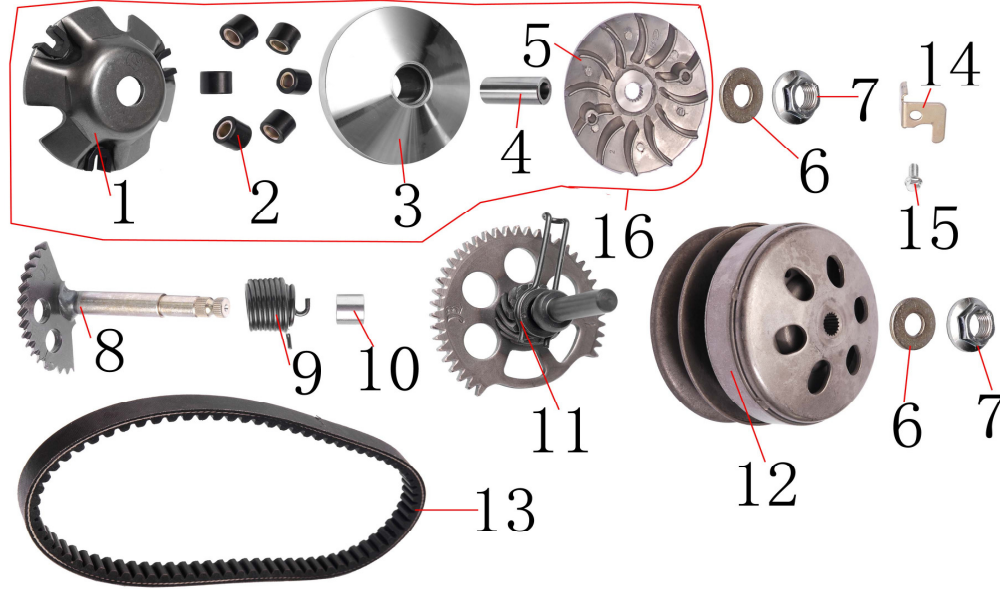
NO.	PART NO.	NAME	Q'ty	REMARK
1	152QMI-10-0001	Gear case cover	1	
2	152QMI-10-0002	Paper washer	1	
3	152QMI-10-0003	Input shaft	1	
4	152QMI-10-0004	Countershaft comp	1	
5	152QMI-10-0005	Final shaft	1	
6	152QMI-10-0006	Final gear	1	
7	152QMI-10-0007	Hexagon bolt M6x28	3	
8	152QMI-10-0008	Hexagon bolt M6x35	2	
9	152QMI-10-0009	Hexagon bolt M8x12	2	

E-10 GEARBOX



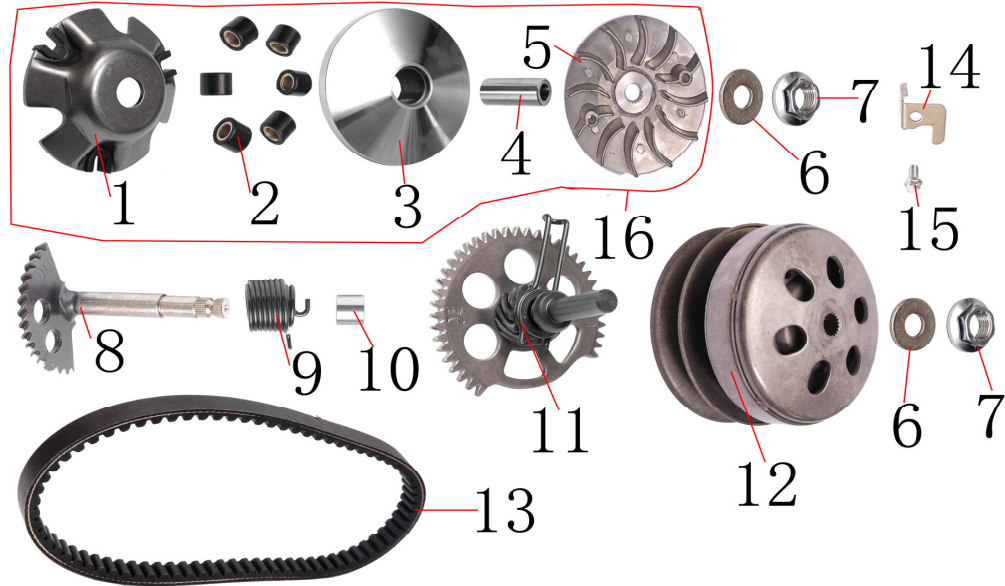
NO.	PART NO.	NAME	Q'ty	REMARK
13	152QMI-10-0013	Gear, kick driven	1	
14	152QMI-10-0014	Bearing 6202	1	
15	152QMI-10-0015	Bearing 6203	1	
16	152QMI-10-0016	Bearing 6204	1	

E-11 CLUTCH ASSEMBLY



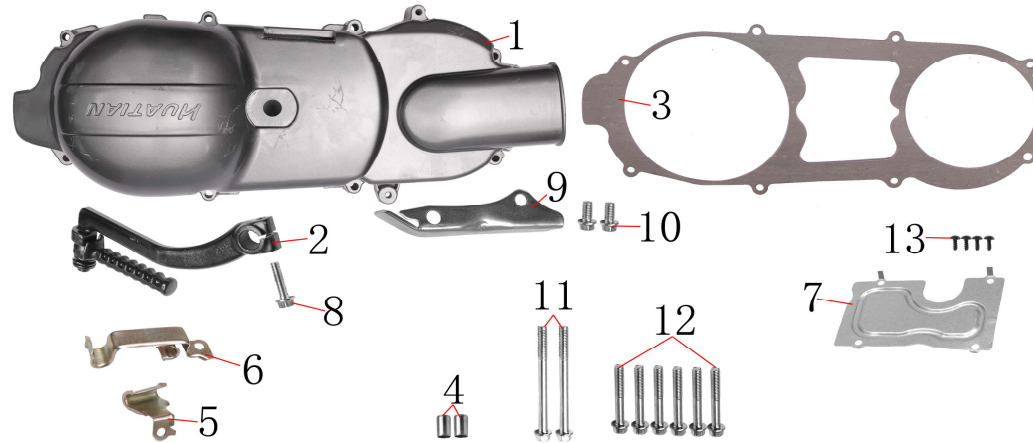
NO.	PART NO.	NAME	Q'ty	REMARK
1	152QMI-11-0001	Ramp plate	1	
2	152QMI-11-0002	Roller	6	
3	152QMI-11-0003	Glide drive plate	1	
4	152QMI-11-0004	Bushing of drive pulley	1	
5	152QMI-11-0005	Fan,belt	1	
6	152QMI-11-0006	Washer M12	2	
7	152QMI-11-0007	Hexagon nut M12	2	
8	152QMI-11-0008	Start shaft	1	
9	152QMI-11-0009	Start spring	1	

E-11 CLUTCH ASSEMBLY



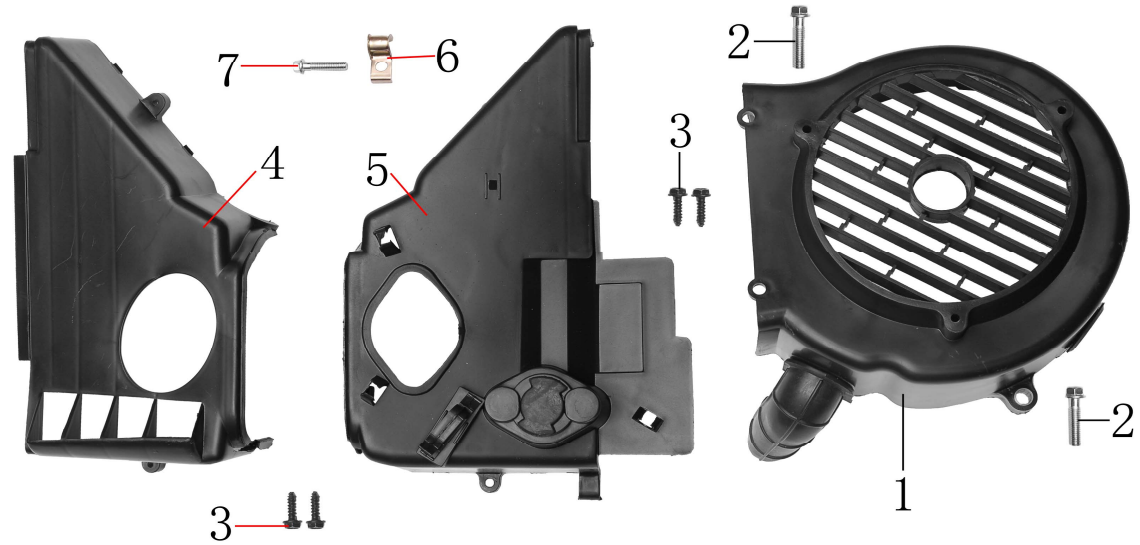
NO.	PART NO.	NAME	Q'ty	REMARK
13	157QMJ-11-0013	Belt	1	
14	152QMI-11-0014	Plate, kick return stopper	1	
15	152QMI-11-0015	Hexagon bolt M6x12	1	
16	157QMJ-11-0016	Drive pulley assy	1	

E-12 CRANKCASE COVER



NO.	PART NO.	NAME	Q'ty	REMARK
1	157QMJ-12-0001	L,crankcase cover	1	
2	152QMI-12-0002	Kick start assy	1	
3	152QMI-12-0003	Washer,L.crankcase cover	1	
4	152QMI-12-0004	Pin,φ8x14	2	
5	152QMI-12-0005	Clip, brake hose/cable	1	
6	152QMI-12-0006	Clip, throttle cable	1	
7	152QMI-12-0007	Breather plate, L cover	1	
8	152QMI-12-0008	Hexagon bolt M6x25	1	
9	152QMI-12-0009	Return plate, main stand	1	
10	152QMI-12-0010	Hexagon bolt M6x12	2	

E-13 FLYWHEEL



NO.	PART NO.	NAME	Q'ty	REMARK
1	152QMI-13-0001	Fan cover	1	
2	152QMI-13-0002	Hexagon bolt M6x25	3	
3	152QMI-13-0003	Bolt M5x12	4	
4	152QMI-13-0004	Cover B	1	
5	152QMI-13-0005	Cover A	1	
6	152QMI-13-0006	clip	1	

