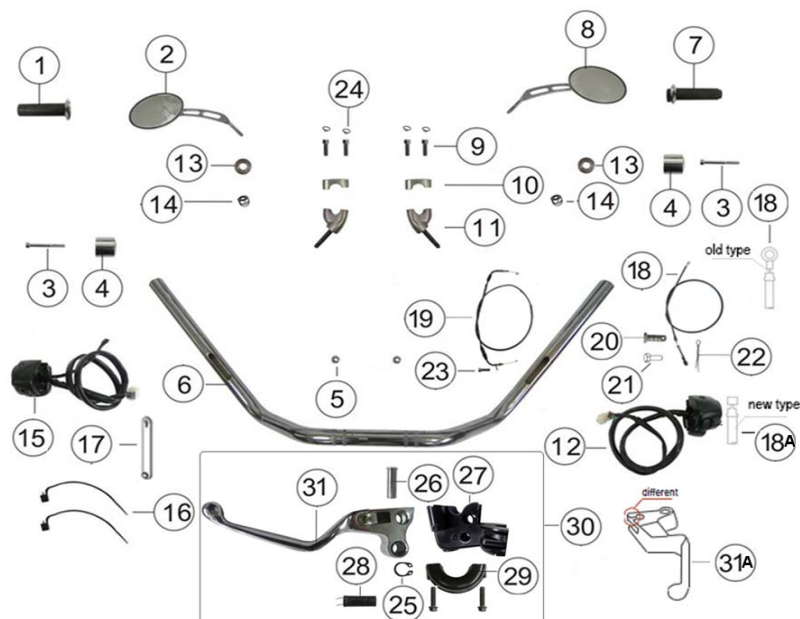


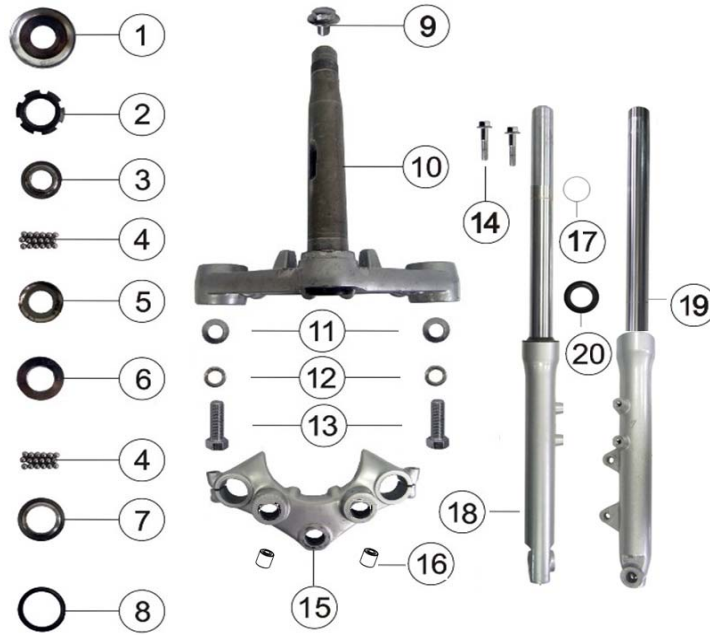
F01 STEERING CONTROL



| NO. | Position No. | CODE | CN DESCRIPTION | EN DESCRIPTION | Qty/Unit |
|-----|--------------|--------------|----------------|----------------------------------|----------|
| 1 | F01 | 40070K2GP000 | 左方向把套 | LEFT GRIP | 1 |
| 2 | F01 | 40450K230001 | 左后视镜组件 | LEFT MIRROR | 1 |
| 3 | F01 | B0205060256L | 内六角螺钉 M6X25 | SCREW 6X25MM | 2 |
| 4 | F01 | 40031K2GP000 | 平衡块 | BALANCE WEIGHT | 2 |
| 5 | F01 | B04171012554 | 螺母M10×1.25 | NUT HEX FLANGE LOCK M10 | 2 |
| 6 | F01 | 40100N060001 | 方向把焊接组件 | HANDLEBAR | 1 |
| 7 | F01 | 40210K2GP000 | 右握把组件 | RIGHT GRIP | 1 |
| 8 | F01 | 40480N070001 | 右后视镜组件 | RIGHT MIRROR | 1 |
| 9 | F01 | B0205080306L | 内六角螺钉M8×30 | ALLEN HEAD BOLT M8X30 | 4 |
| 10 | F01 | 43014N060000 | 方向把上座 | UPPER BRACKET, HANDLEBAR | 2 |
| 11 | F01 | 43410N060000 | 龙头下安装座组件 | LOWER BRACKET, HANDLEBAR | 2 |
| 12 | F01 | 40600N070001 | 右组合开关 | SWITCH RIGHT LEVER SET | 1 |
| 13 | F01 | B0407080005L | 螺母M8 | NUT M8 | 2 |
| 14 | F01 | B04220800044 | 盖形螺母M8 | NUT HEX FLANGE M8 | 2 |
| 15 | F01 | 40500N070002 | 左组合开关 | SWITCH LEFT LEVER SET | 1 |
| 16 | F01 | 96001N0HP000 | 绑带150mm | NYLON BAND | 2 |
| 17 | F01 | 49371T620000 | 截止阀软管夹 | CIAMP ; STOP VALVE | 2 |
| 18 | F01 | 40400N050001 | 离合器线组件 | CABLE CLUTCH | 1 |
| 18A | F01 | 40400N050005 | 离合器线组件 | CABLE CLUTCH | 1 |
| 19 | F01 | 40300N050002 | 油门线组件 | CABLE THROTTLE | 1 |
| 20 | F01 | B090406014A5 | 销轴6×14 | PIN 6X14 | 1 |
| 21 | F01 | B0101060162L | 螺栓M6×16 | BOLT M6X16 | 1 |
| 22 | F01 | B090002018A5 | 开口销2×18 | COTTER PIN 2X18 | 1 |
| 23 | F01 | B0200040102L | 螺钉 M4X10 | SCREW M4X10 | 1 |
| 24 | F01 | 65822J000000 | 内六角装饰盖 | COVER,DECORATE | 4 |
| 25 | F01 | B08010001000 | 轴用弹性挡圈 | CIRCLIP | 1 |
| 26 | F01 | 40083K2GP000 | 左手柄螺丝10×33 | PIN 10×33 | 1 |
| 27 | F01 | 40082N050000 | 手柄固定座 | LOWER BRACKET, LEFT HANDLE LEVER | 1 |
| 28 | F01 | 91800J0FP000 | 开关组件 | SWITCH, CLUTCH | 1 |
| 29 | F01 | 40081K2GP000 | 固定盖 | UPPER BRACKET, LEFT HANDLE LEVER | 1 |
| 30 | F01 | 40080N070000 | 左手柄组件 | LEVER ASSY,LEFT | 1 |
| 30A | F01 | 40080N070001 | 左手柄组件 | LEVER ASSY,LEFT | 1 |
| 31 | F01 | 40084K2GP000 | 左手柄 | LEVER LEFT | 1 |
| 31A | F01 | 40084K230003 | 左手柄 | LEVER LEFT | 1 |

F02前叉

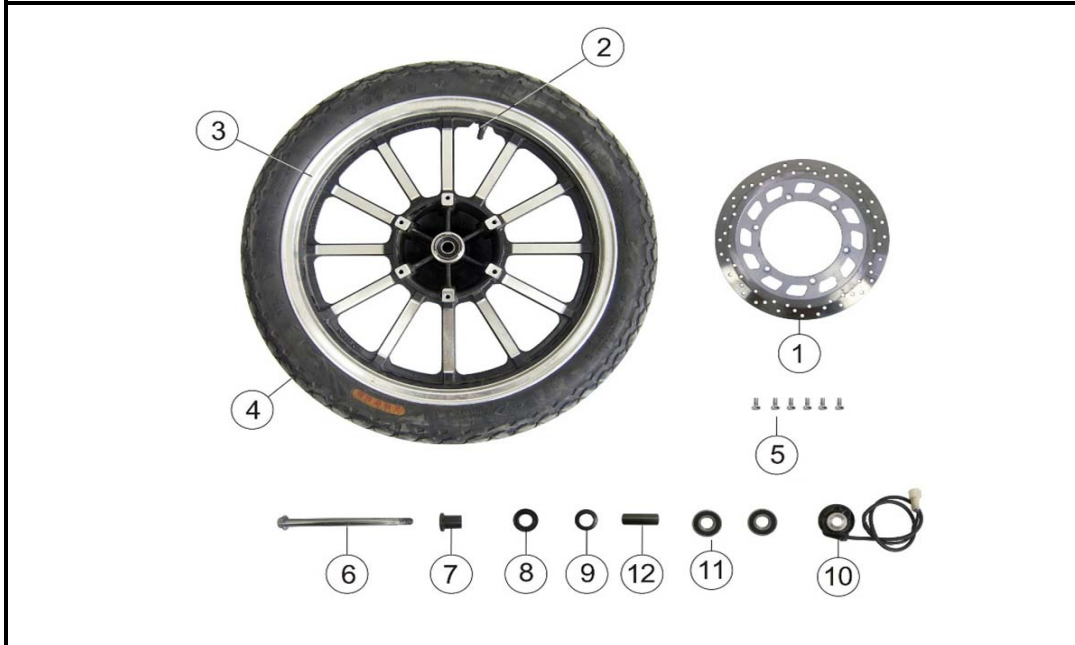
F02 FRONT FORK



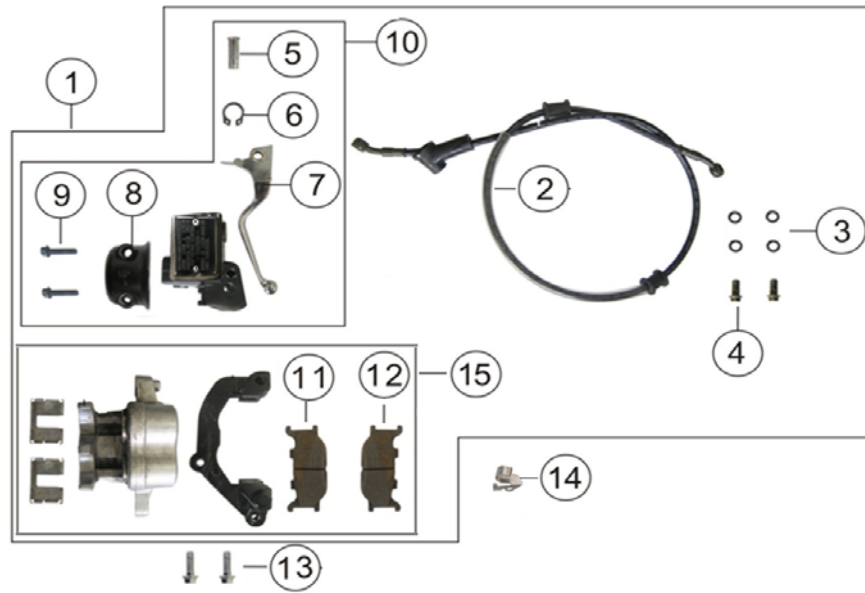
| NO. | Position No. | CODE | CN DESCRIPTION | EN DESCRIPTION | Qty/Unit |
|-----|--------------|--------------|-----------------------|-------------------------------------|----------|
| 1 | F02 | 43005K3AP000 | 防尘盖 | DUST SEAL | 1 |
| 2 | F02 | 40087K020010 | 开槽螺母 | NUT SPECIAL | 1 |
| 3 | F02 | 43001K020000 | 上轴承上钢碗 | UPPER INNER RACE | 1 |
| 4 | F02 | B06010200000 | 钢珠1/4英寸 | BALL | 38 |
| 5 | F02 | 43002G0KP000 | 上轴承下钢碗 | UPPER OUTER RACE | 1 |
| 6 | F02 | 43003G0KP000 | 下轴承上钢碗 | LOWER OUTER RACE | 1 |
| 7 | F02 | 43004K020000 | 下轴承下钢碗 | LOWER INNER RACE | 1 |
| 8 | F02 | 43019K020000 | 方向柱橡胶垫 | DUST SEAL | 1 |
| 9 | F02 | 08011K020000 | 螺栓M14X1.25X20 | BOLT HEX FLANGE HEAD M14X1.25X20 | 1 |
| 10 | F02 | 43102N020000 | 下联板组件含方向柱43101N020010 | STEERING STEM | 1 |
| 11 | F02 | B0703000120L | 垫圈12 | FLAT WASHER 12 | 1 |
| 12 | F02 | B0700000120L | 弹簧垫圈φ12 | SPRING WASHER | 1 |
| 13 | F02 | B01061203564 | 下联板紧固螺栓M12×1.25×35 | BOLT HEX HEAD M12×1.25×35 | 2 |
| 14 | F02 | B0109080406L | 上联板紧固螺栓M8X40 | BOLT HEX FLANGE HEAD M8X40 | 2 |
| 15 | F02 | 43011N020000 | 上联板 | STEM HEAD, STEERING STEM | 1 |
| 16 | F02 | 43237K020000 | 上联板缓冲套 | BUSH,BUFFER | 1 |
| 17 | F02 | 43260G070000 | 油封组件 | OIL SEAL | 2 |
| 18 | F02 | 43300N060001 | 前右减震器组件 | RIGHT FRONT SHOCK ABSORBER SET | 1 |
| 19 | F02 | 43200N060001 | 前左减震器组件 | LEFT FRONT SHOCK ABSORBER SET | 1 |
| 20 | F02 | 43290G070000 | 防尘圈组件 | DUST SEAL | 2 |

F03前轮

F03 FRONT WHEEL



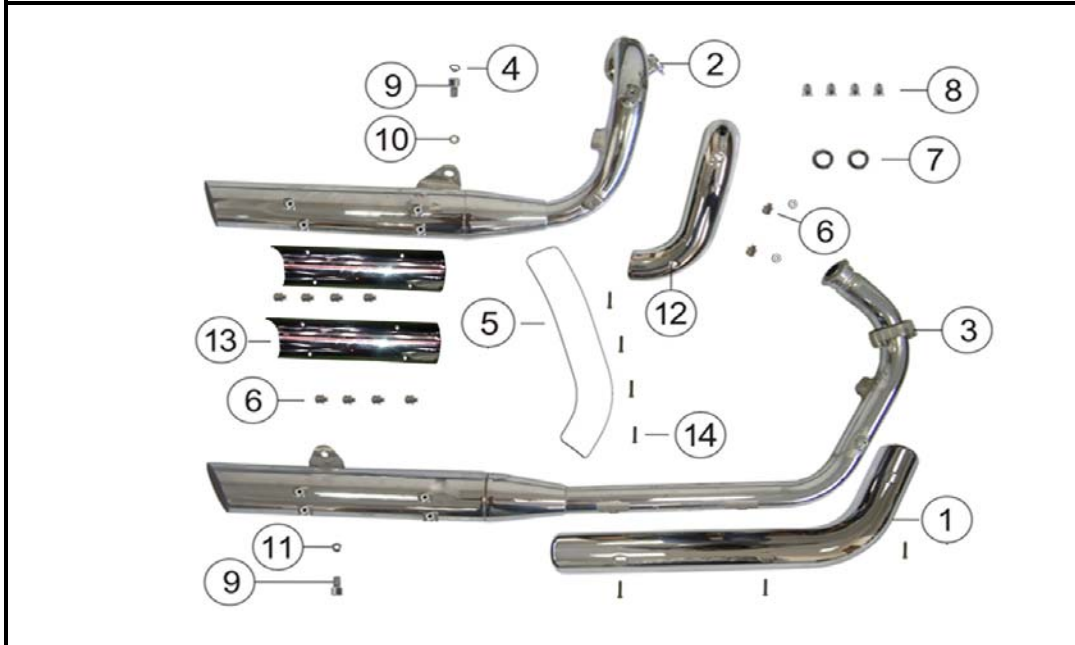
| NO. | Position No. | CODE | CN DESCRIPTION | EN DESCRIPTION | Qty/Unit |
|-----|--------------|--------------|----------------|----------------------------|----------|
| 1 | F03 | 45033N070000 | 前制动盘 | FRONT BRAKE DISK | 1 |
| 2 | F03 | B1403Z201100 | 气门嘴 | AIR VALVE | 1 |
| 3 | F03 | 44101N060001 | 前轮圈 | FRONT WHEEL | 1 |
| 4 | F03 | B14013001820 | 真空胎3.00-18 | TIRE | 1 |
| 5 | F03 | B02070801624 | 螺钉M8×16 | BOLT ALLEN PAN HEAD M10X15 | 6 |
| 6 | F03 | 44004K020000 | 前轮轴Ø14X240 | FRONT WHEEL AXLE Ø14X240 | 1 |
| 7 | F03 | 44016K020010 | 前轮右轴套 | SPACER | 1 |
| 8 | F03 | 44300K020000 | 前轮毂油封 | DUST SEAL | 1 |
| 9 | F03 | 44017J130001 | 防尘圈 | OIL SEAL | 1 |
| 10 | F03 | 44200N060001 | 齿轮座组件 | SPEEDOMETER GEAR, SET | 1 |
| 11 | F03 | B12016020200 | 滚动轴承6202-2RS | BEARING 6302-2RS | 2 |
| 12 | F03 | 44006K020000 | 前轮中间轴套 | SPACER | 1 |



| NO. | Position No. | CODE | CN DESCRIPTION | EN DESCRIPTION | Qty/Unit |
|-----|--------------|--------------|-------------------|-------------------------------------|----------|
| 1 | F04 | 45900N060001 | 前液刹组件 | FRONT BRAKE, SET | 1 |
| 2 | F04 | 45200N060001 | 制动软管总成 | BRAKE CONDUIT | 1 |
| 3 | F04 | 45029J000000 | 密封垫 | SEALING WASHER 10 | 1 |
| 4 | F04 | 45037J000000 | 螺栓 | SPC BOLT HEX FLANGE HEAD M10X22 | 2 |
| 5 | F04 | 45024K230000 | 手柄固定销 | PIN | 1 |
| 6 | F04 | B08010001000 | 弹性挡圈 | CIRCLIP | 1 |
| 7 | F04 | 45022K2GP000 | 液刹手柄 | RIGHT LEVER | 1 |
| 8 | F04 | 45023K2GP000 | 固定盖 | BRACKET | 1 |
| 9 | F04 | 40086K230000 | 半圆头螺钉 | BOLT HEX FLANGE HEAD M6X25 | 2 |
| 10 | F04 | 45400N050000 | 油泵体组件 | MAIN CYLINDER, SET | 1 |
| 11 | F04 | 45120N020000 | 左制动蹄块组件 | LEFT BRAKE PAD | 1 |
| 12 | F04 | 45130N020000 | 右制动蹄块组件 | RIGHT BRAKE PAD | 1 |
| 13 | F04 | B01591003564 | 液刹安装螺栓M10×1.25×35 | BOLT HEX FLANGE HEAD M10×1.25×35 | 2 |
| 14 | F04 | 40022K020000 | 线夹 | BRAKE CONDUIT GUIDE | 1 |
| 15 | F04 | 45500N060000 | 前制动缸组件 | CALIPER ASSY | 1 |

F05消音器

F05 MUFFLER



| NO. | Position No. | CODE | CN DESCRIPTION | EN DESCRIPTION | Qty/Unit |
|-----|--------------|--------------|----------------|--|----------|
| 1 | F05 | 47760N070001 | 消声器装饰板组件I | CAP, EXHAUST PIPE I | 1 |
| 2 | F05 | 48100N07000L | 消音器焊接组件B(无触媒) | EXHAUST MUFFLERII,without catalyzer | 1 |
| 3 | F05 | 47100N07000L | 消音器焊接组件A(无触媒) | EXHAUST MUFFLER I,without catalyzer | 1 |
| 4 | F05 | 65823K020000 | 内六角装饰盖M10 | COVER,DECORATIVE | 2 |
| 5 | F05 | 47770N070001 | 消声器装饰板组件III | CAP, EXHAUST PIPE III | 1 |
| 6 | F05 | B1306060100L | 组合螺钉M6×10 | BOLT SPC PHILIPS HEAD M6X10 WITH FLAT AND SPRING WASHER | 10 |
| 7 | F05 | 47800N0HP000 | 排气管衬垫 | GASKET, EXHAUST MUFFLER | 2 |
| 8 | F05 | 47006J0AP000 | 盖形螺母M6 | NUT SPC HEX FLANGE M6 STRIPED | 4 |
| 9 | F05 | B02551001664 | 内六角螺钉M10×16 | ALLEN HEAD BOLT M10X16 | 2 |
| 10 | F05 | B0703000100L | 垫圈Φ10 | FLAT WASHER 10 | 1 |
| 11 | F05 | B04181012554 | 螺母M10 | NUT HEX FLANGE M10 | 1 |
| 12 | F05 | 47771N0LP000 | 装饰板II | CAP, EXHAUST PIPEII | 1 |
| 13 | F05 | 47023N060003 | 消声器装饰罩 | DECORATIVE COVER | 2 |
| 14 | F05 | B0200060202L | 螺钉M6×20 | SCREW M6×20 | 7 |

F06空滤器

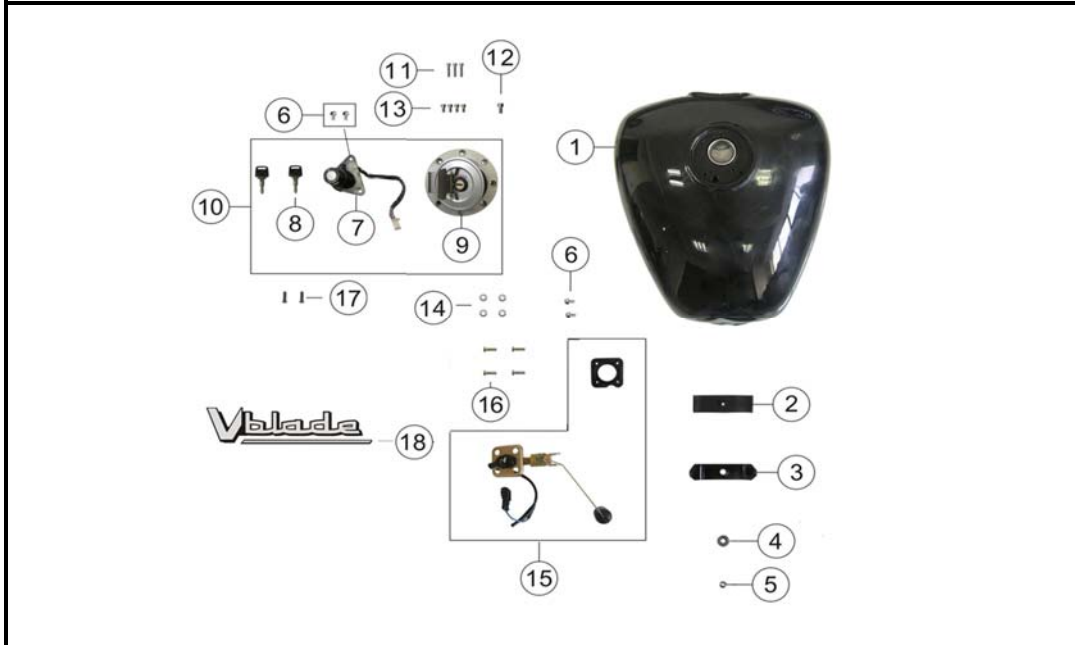
F06 AIR CLEANER



| NO. | Position No. | CODE | CN DESCRIPTION | EN DESCRIPTION | Qty/Unit |
|-----|--------------|--------------|----------------|------------------------------------|----------|
| 1 | F06 | 49002N050002 | 截流阀体进气管 | AIR INTAKE TUBE | 1 |
| 2 | F06 | 49016N070001 | 不锈钢卡箍40-60 | CLIP 40-60 | 1 |
| 3 | F06 | 49100N070000 | 空滤器组件 | AIR CLEANER , SET | 1 |
| 4 | F06 | B17010120000 | 夹箍12 | CLAMP | 2 |
| 5 | F06 | 49011N050000 | 油塞 | CAP, TUBE | 1 |
| 6 | F06 | B16010823101 | 出油管8X2X310 | PLASTIC HOSE | 1 |
| 7 | F06 | 49002N0HP000 | 进气口件 | OIL SEPARATOR BOX | 1 |
| 8 | F06 | B05004801305 | 自攻螺钉ST4.8X13 | SCREW PAN PHILIPS HEAD ST4.8X13 | 4 |
| 9 | F06 | 49001N0HP000 | 空滤器上盖 | AIR CLEANER COVER | 1 |
| 10 | F06 | B04000500052 | 螺母M5 | NUT HEX M5 | 1 |
| 11 | F06 | B07020000502 | 平垫圈5 | FLAT WASHER 5 | 1 |
| 12 | F06 | 49025N020000 | 滤芯固定板 | FILTER FOAM SUPPORT | 1 |
| 13 | F06 | 49208N0HP000 | 滤芯 | FILTER FOAM | 1 |
| 14 | F06 | 49660N020000 | 滤芯安装架组件 | AIR CLEANER FRAME | 1 |
| 15 | F06 | 49100N050000 | 空滤器箱体组件 | AIR CLEANER BOX | 1 |
| 16 | F06 | 49350N060000 | 卡箍组件 | CLAMP | 1 |
| 17 | F06 | 49340N0JP000 | 空滤器安装座 | AIR CLEANER SUPPORT | 1 |
| 18 | F06 | B0109060126L | 螺栓M6X12 | BOLT HEX FLANGE HEAD M6X12 | 2 |
| 19 | F06 | B02000604024 | 螺钉M6X40 | BOLT PAN PHILIPS HEAD M6X40 | 2 |
| 20 | F06 | B0109060406L | 螺栓M6×40 | BOLT HEX FLANGE HEAD M6X40 | 2 |
| 21 | F06 | 49702N0JP000 | 装饰盖支架 | BRACKET,DECORATION | 1 |

F07燃油箱

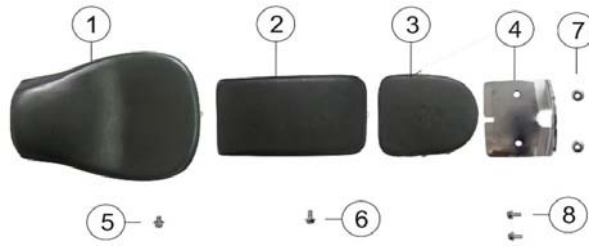
F07 FUEL TANK



| NO. | Position No. | CODE | CN DESCRIPTION | EN DESCRIPTION | Qty/Unit |
|-----|--------------|--------------|----------------|----------------------------|----------|
| 1 | F07 | 50100N06CJ02 | 油箱体组件(四方闪银CJ) | FUEL TANK (SILVER CJ) | 1 |
| 1 | F07 | 50100N06TT02 | 油箱体组件(四方紫红TT) | FUEL TANK (PURPLE TT) | 1 |
| 1 | F07 | 50100N06B202 | 油箱体组件(珍珠黑B2) | FUEL TANK (BLACK B2) | 1 |
| 2 | F07 | 50006N0JP000 | 油箱安装垫 | RUBBER CUSHION | 1 |
| 3 | F07 | 50025N0JP00A | 油箱压板 | FUEL TANK SUPPORT | 1 |
| 4 | F07 | B0702000060L | 垫圈6 | FLAT WASHER 6 | 1 |
| 5 | F07 | B0407060005L | 螺母M6 | NUT HEX FLANGE M6 | 1 |
| 6 | F07 | B0107060126L | 螺栓M6X12 | BOLT HEX FLANGE HEAD M6X12 | 2 |
| 7 | F07 | 88100N060000 | 电源锁 | IGNITION | 1 |
| 8 | F07 | 88900N060001 | 钥匙毛坯 | KEY | 1 |
| 9 | F07 | 88400N060000 | 油箱锁组件 | FUEL TANK CAP | 1 |
| 10 | F07 | 88000N060003 | 套锁 | IGNITION SET | 1 |
| 11 | F07 | B0205050226A | 内六角螺钉M5×22 | ALLEN HEAD BOLT M5X22 | 3 |
| 12 | F07 | B0205050106A | 内六角螺钉M5×10 | ALLEN HEAD BOLT M5X10 | 1 |
| 13 | F07 | B0109060126L | 螺栓M6X12 | BOLT HEX FLANGE HEAD M6X12 | 2 |
| 14 | F07 | 08021J000000 | 油箱开关安装垫圈 | FLAT WASHER 6 | 4 |
| 15 | F07 | 50800N060001 | 燃油传感器组件 | FUEL SENSOR SET | 1 |
| 16 | F07 | B01090501665 | 螺栓M5X16 | BOLT HEX FLANGE HEAD M5X16 | 4 |
| 17 | F07 | B02010601223 | 螺钉M6×12 | SCREW M6×12 | 2 |
| 18 | F07 | 05531N060000 | 油箱贴花 | VBLADE LABEL | 2 |

F08座垫

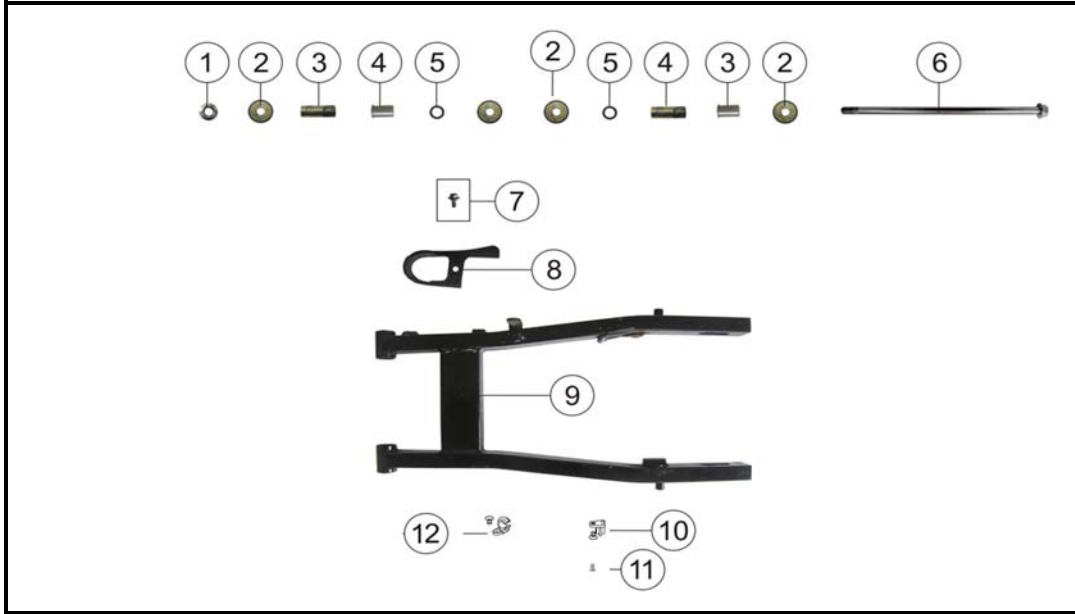
F08 SEAT



| NO. | Position No. | CODE | CN DESCRIPTION | EN DESCRIPTION | Qty/Unit |
|-----|--------------|--------------|----------------|-----------------------------|----------|
| 1 | F08 | 51100N0LP000 | 座垫组件(大号) | SEAT, DRIVER | 1 |
| 2 | F08 | 51100N070006 | 座垫II | SEAT, PASSENGER | 1 |
| 3 | F08 | 51310N060001 | 坐垫III | BACKREST | 1 |
| 4 | F08 | 51300N060000 | 后靠背组件 | BRACKET, BACKREST | 1 |
| 5 | F08 | B0109080126M | 螺栓M8×12 | BOLT HEX FLANGE HEAD M8X12 | 1 |
| 6 | F08 | B0109080166M | 螺栓M8×16 | BOLT HEX FLANGE HEAD M8X16 | 1 |
| 7 | F08 | B0407080005L | 后靠背盖形螺母 | NUT HEX FLANGE M8 | 2 |
| 8 | F08 | B0109100206L | 螺栓M10X20 | BOLT HEX FLANGE HEAD M10X20 | 2 |

F09后摆臂

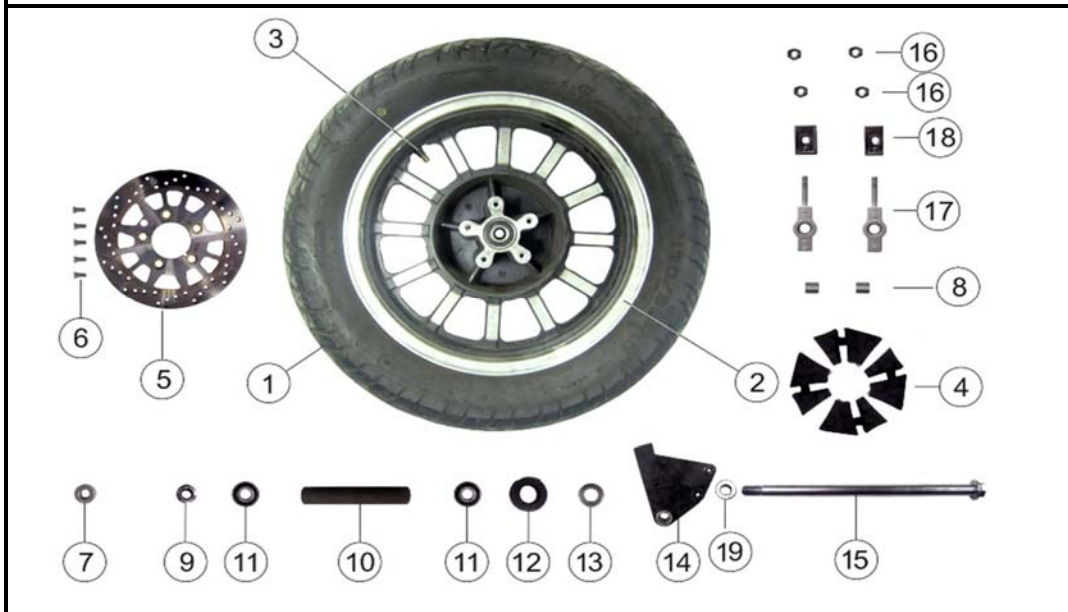
F09 REAR SWINGING ARM



| NO. | Position No. | CODE | CN DESCRIPTION | EN DESCRIPTION | Qty/Unit |
|-----|--------------|--------------|--------------------|-----------------------------------|----------|
| 1 | F09 | B04171212564 | 自锁螺母M12×1.25 | NUT HEX FLANGE LOCK M12×1.25 | 1 |
| 2 | F09 | 44017J130001 | 防尘圈 | DUST SEAL | 4 |
| 3 | F09 | 53007N020000 | 后摆臂轴套 | BUSH | 2 |
| 4 | F09 | 53009N050000 | 衬套 | SPACER | 2 |
| 5 | F09 | 53017N050000 | 后摆臂油封 | OIL SEAL | 2 |
| 6 | F09 | 53001N0JP000 | 后摆臂安装轴M12×1.25×285 | REAR FORK AXLE M12×1.25×285 | 1 |
| 7 | F09 | 08011H010000 | 凸台螺栓 | SPC BOLT HEX FLANGE HEAD M6×12 | 1 |
| 8 | F09 | 53004N050000 | 链条防护块 | CHAIN BLOCK | 1 |
| 9 | F09 | 53100N060001 | 后摆臂焊接组件 | REAR FORK | 1 |
| 10 | F09 | 53009N0JP000 | 线夹 | BRAKE HOSE SUPPORT | 2 |
| 11 | F09 | B02010601024 | 螺钉M6×10 | BOLT PAN PHILIPS HEAD M6X10 | 2 |
| 12 | F09 | 55038N0JP000 | 后液刹线夹 | REAR BRAKE CABLE GUIDE | 1 |

F10_1 后轮

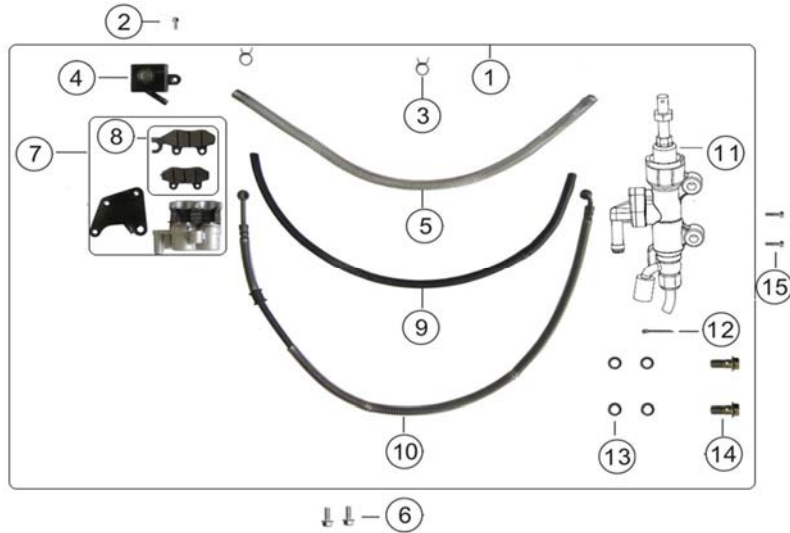
F10_1 REAR WHEEL



| NO. | Position No. | CODE | CN DESCRIPTION | EN DESCRIPTION | Qty/Unit |
|-----|--------------|--------------|----------------|------------------------------------|----------|
| 1 | F10 | B140508F1521 | 真空胎130/90-15 | TIRE | 1 |
| 2 | F10 | 54101N060001 | 后轮圈 | REAR WHEEL | 1 |
| 3 | F10 | B1403Z201100 | 气门嘴 | AIR VALVE | 1 |
| 4 | F10 | 54024N050001 | 后轮缓冲块 | RUBBER CUSHION | 4 |
| 5 | F10 | 55033N050002 | 后制动盘 | REAR BRAKE DISK | 1 |
| 6 | F10 | 08014N050000 | 螺栓M8×22.5 | SPC BOLT ALLEN PAN HEAD M8X22.5 | 5 |
| 7 | F10 | B04171415064 | 自锁螺母M14×1.5 | NUT HEX FLANGE LOCK M14 | 1 |
| 8 | F10 | 53235N050000 | 链条调节器衬套 | BUSH | 2 |
| 9 | F10 | 60007N050000 | 后左轴套 | SPACER | 1 |
| 10 | F10 | 54550N0JP000 | 后轮中间轴套 | SPACER | 1 |
| 11 | F10 | B12016030200 | 滚动轴承6302-2RS | BEARING 6302-2RS | 2 |
| 12 | F10 | 54300N0JP000 | 油封 | OIL SEAL | 1 |
| 13 | F10 | 54005N050000 | 后轮右轴套 | SPACER | 1 |
| 14 | F10 | 55401N050000 | 液刹安装板 | REAR BRAKE SUPPORT | 1 |
| 15 | F10 | 54004N050000 | 后轮轴 | REAR WHEEL AXLE Ø14X290 | 1 |
| 16 | F10 | B0400080005L | 螺母M8 | NUT HEX M8 | 4 |
| 17 | F10 | 53231K020000 | 链条调节器组件 | ADJUSTING, DRIVE CHAIN | 2 |
| 18 | F10 | 53234K020000 | 链条调节器压板 | PLATE, DRIVE CHAIN ADJUSTING | 2 |
| 19 | F10 | 54018N030000 | 垫圈Φ14×Φ30×2.5 | WASHER Φ14×Φ30×2.5 | 1 |

F11后液刹总成

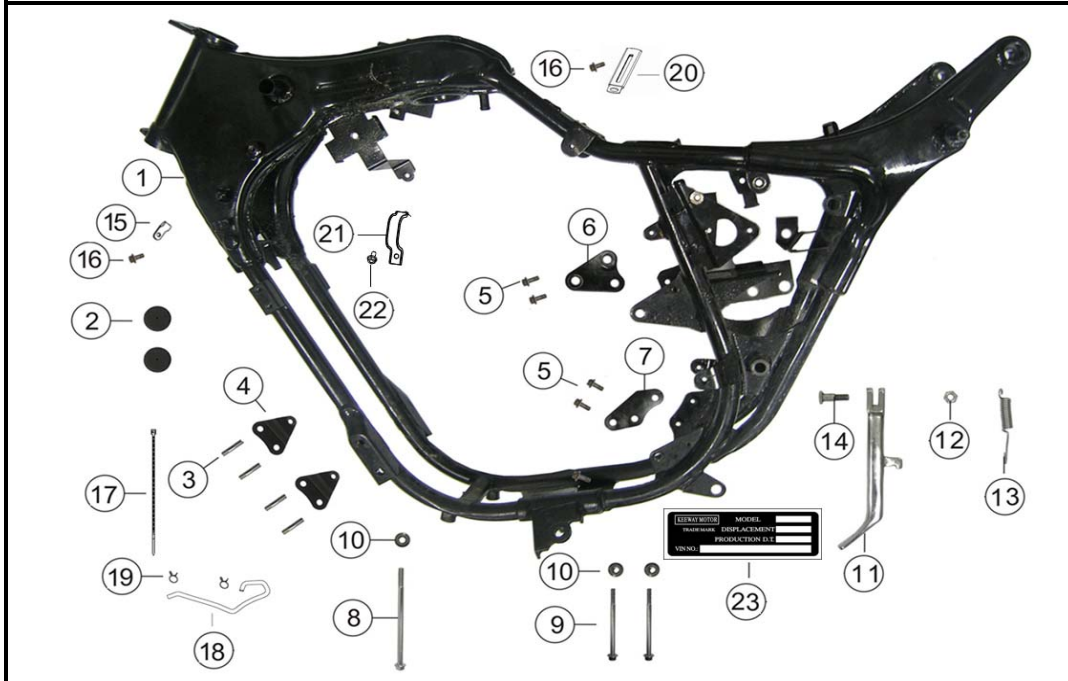
F11 REAR DISK BRAKE



| NO. | Position No. | CODE | CN DESCRIPTION | EN DESCRIPTION | Qty/Unit |
|-----|--------------|--------------|----------------|---------------------------------|----------|
| 1 | F11 | 55900N070001 | 后液刹组件 | REAR BRAKE, SET | 1 |
| 2 | F11 | B0109060166L | 螺栓M6×16 | BOLT HEX FLANGE HEAD M6X16 | 1 |
| 3 | F11 | 55067N050000 | 抱箍 | CLIP | 2 |
| 4 | F11 | 55140N050000 | 油杯组件 | MAIN CYLINDER, SET | 1 |
| 5 | F11 | 55906N050000 | 油管防护弹簧 | SPRING | 1 |
| 6 | F11 | B0109080206L | 螺栓M8×20 | BOLT M8×20 | 2 |
| 7 | F11 | 55500N050000 | 制动缸组件 | CALIPER CASE | 1 |
| 8 | F11 | 55110N050000 | 摩擦片组件(后液刹) | BRAKE PAD ASSY | 1 |
| 9 | F11 | 55065N050000 | 油管 | RUBBER HOSE | 1 |
| 10 | F11 | 55200N060001 | 制动软管总成 | BRAKE CONDUIT | 1 |
| 11 | F11 | 55400N0JP000 | 油泵体组件 | REAR BRAKE OIL TANK | 1 |
| 12 | F11 | B090002016A3 | 开口销2×16 | COTTER PIN 2X16 | 1 |
| 13 | F11 | 45029J000000 | 密封垫 | SEALING WASHER 10 | 4 |
| 14 | F11 | 45037J000000 | 螺栓 | SPC BOLT HEX FLANGE HEAD M10X22 | 2 |
| 15 | F11 | B0109060206L | 螺栓M6×20 | BOLT HEX FLANGE HEAD M6X20 | 2 |

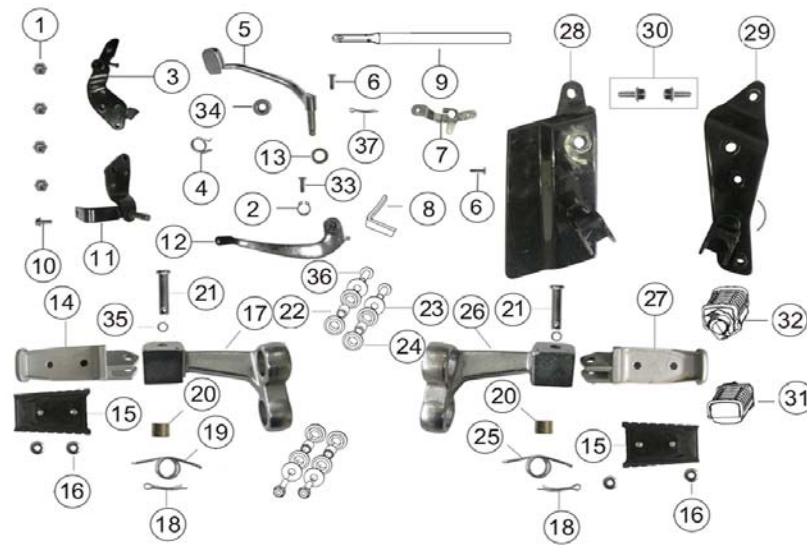
F12车架

F12 FRAME



| NO. | Position No. | CODE | CN DESCRIPTION | EN DESCRIPTION | Qty/Unit |
|-----|--------------|--------------|----------------|-----------------------------|----------|
| 1 | F12 | 57100N060002 | 车架焊接组件 | CHASSIS | 1 |
| 2 | F12 | 50005N0HP000 | 油箱安装垫 | RUBBER CUSHION | 2 |
| 3 | F12 | 57037N050000 | 前踏蹬固定螺栓 | STUD | 4 |
| 4 | F12 | 57011N0HP000 | 发动机前挂板 | UPPER ENGINE BRACKET | 2 |
| 5 | F12 | B0109080166M | 螺栓M8X16 | BOLT HEX FLANGE HEAD M8X16 | 4 |
| 6 | F12 | 57008N0HP000 | 发动机右上挂板 | RIGHT UPPER ENGINE BRACKET | 1 |
| 7 | F12 | 57009N0HP00A | 发动机左下挂板 | RIGHT LOWER ENGINE BRACKET | 1 |
| 8 | F12 | 58303N0HP000 | 螺栓M8X148 | BOLT HEX FLANGE HEAD M8X148 | 1 |
| 9 | F12 | B01090811064 | 螺栓M8×110 | BOLT HEX FLANGE HEAD M8X110 | 2 |
| 10 | F12 | B0407080005L | 螺母M8 | NUT HEX FLANGE LOCK M8 | 3 |
| 11 | F12 | 58701N050000 | 单撑 | SIDE STAND | 1 |
| 12 | F12 | B04001012564 | 螺母M10×1.25 | NUT HEX M10×1.25 | 1 |
| 13 | F12 | 57003K020000 | 单撑弹簧 | SIDE STAND SPRING | 1 |
| 14 | F12 | 57005N0JP000 | 单撑螺栓 | BOLT SPC HEX FLANGE HEAD | 1 |
| 15 | F12 | 43070D010020 | 里程表线夹组件2 | CLIP | 2 |
| 16 | F12 | B0109060126L | 螺栓M6X12 | BOLT HEX FLANGE HEAD M6X12 | 3 |
| 17 | F12 | 40098B450000 | 绑扎带3X150 | BAND 3X150 | 1 |
| 18 | F12 | 150055040002 | 气压平衡管(通气管) | HOSE | 1 |
| 19 | F12 | B17010160003 | 钢丝卡箍Φ16 | CLIP 16mm | 2 |
| 20 | F12 | 58430J000000 | 线夹组件 | WIRE CLIP | 1 |
| 21 | F12 | 57012N070000 | 电缆固定线夹 | CLIP , LEFT | 1 |
| 22 | F12 | B0109060106L | 螺栓M6X10 | BOLT M6X10 | 1 |
| 23 | F12 | 57001N07000C | 车架标牌 | PLATE, LABEL | 1 |

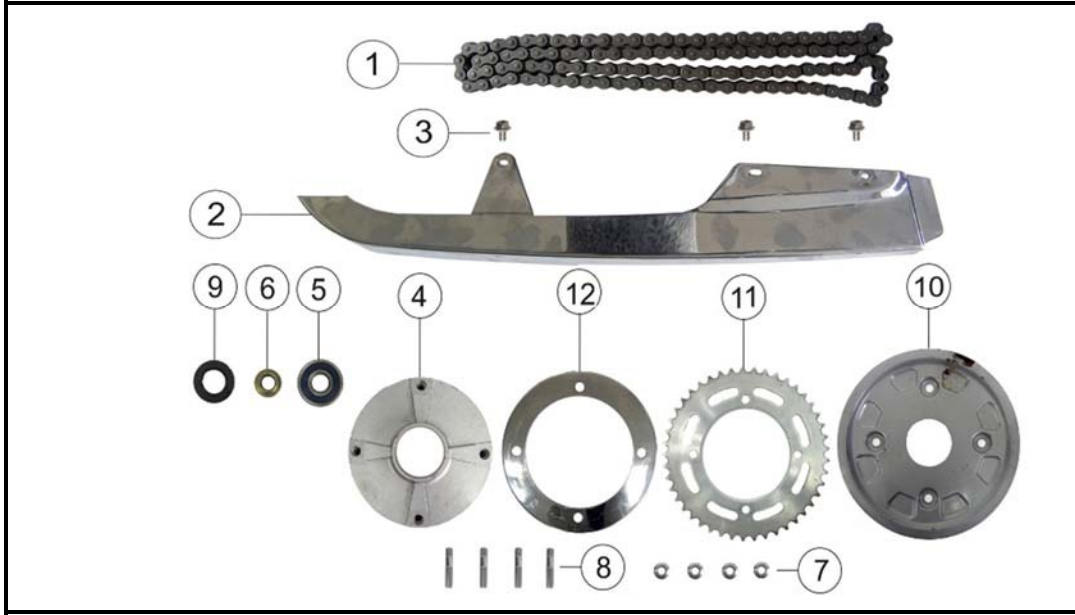
F13 BRAKE PEDAL&FOOT REST ASSY



| NO. | Position No. | CODE | CN DESCRIPTION | EN DESCRIPTION | Qty/Unit |
|-----|--------------|--------------|----------------|--------------------------------------|----------|
| 1 | F13 | 08052J000000 | 盖形螺母M10X1.25 | NUT SPC HEX FLANGE M10 STRIATED | 4 |
| 2 | F13 | B08010001201 | 轴用弹性挡圈φ12 | CIRCLIP φ12 | 1 |
| 3 | F13 | 40720N0LP000 | 刹车踏板支架组件 | BRACKET, FOOTREST RH | 1 |
| 4 | F13 | 40702N0HP000 | 刹车踏板复位弹簧 | BRAKE PEDAL SPRING | 1 |
| 5 | F13 | 40710N020000 | 刹车踏板焊接组件 | BRAKE PEDAL | 1 |
| 6 | F13 | B0102060206L | 螺栓M6×20 | BOLT HEX HEAD M6X20 | 1 |
| 7 | F13 | 40730N0LP000 | 后制动摇臂组件 | BRAKE PEDAL BRACKET | 1 |
| 8 | F13 | 40724N0LP000 | 刹车踏板加强板 | BRACKET PLATE | 1 |
| 9 | F13 | 40270N0LP000 | 后刹拉杆组件 | REAR BRAKE LEVER ASSY | 1 |
| 10 | F13 | B0109080166M | 螺栓M8×16 | BOLT HEX FLANGE HEAD M8X20 | 3 |
| 11 | F13 | 58220N0JP000 | 左前踏蹬安装板 | BRACKET, FOOTREST LH | 1 |
| 12 | F13 | 08370N020000 | 换挡踏杆组件 | GEAR SHIFT | 1 |
| 13 | F13 | 08029J00P000 | 垫圈 | FLAT WASHER | 1 |
| 14 | F13 | 58226N020000 | 左踏蹬杆 | SUPPORT, LEFT SIDE PILOT'S FOOTREST | 1 |
| 15 | F13 | 58221N020000 | 前踏蹬橡胶 | FOOTREST RUBBER | 1 |
| 16 | F13 | B0407060005L | 螺母M6 | NUT HEX FLANGE M6 | 2 |
| 17 | F13 | 58220N020000 | 左前脚蹬组件 | LEFT FOOTREST BRACKET | 1 |
| 18 | F13 | B090003025A3 | 开口销3×25 | COTTER PIN 3×25 | 2 |
| 19 | F13 | 58202N020000 | 左踏蹬弹簧 | SPRING,LEFT | 1 |
| 20 | F13 | 58224N020000 | 弹簧衬套 | SPACER | 2 |
| 21 | F13 | B090408040B4 | 销轴8×40 | PIN 8×40 | 2 |
| 22 | F13 | 58228N0HP000 | 钢管衬套 | BUSH | 4 |
| 23 | F13 | B07020001004 | 垫圈φ10 | WASHER 10 | 4 |
| 24 | F13 | 58229N0HP000 | 橡胶衬套 | RUBBER CUSHION | 8 |
| 25 | F13 | 58402N020000 | 右踏蹬弹簧 | SPRING,RIGHT | 1 |
| 26 | F13 | 58240N020000 | 右前踏蹬组件 | RIGHT FOOTREST BRACKET | 1 |
| 27 | F13 | 58246N020000 | 右踏蹬杆 | SUPPORT, RIGHT SIDE PILOT'S FOOTREST | 1 |
| 28 | F13 | 58270N050000 | 左后踏蹬焊接组件 | LEFT REAR FOOTREST SUPPORT | 1 |
| 29 | F13 | 58290N070007 | 右后踏蹬焊接组件 | RIGHT REAR FOOTREST SUPPORT | 1 |
| 30 | F13 | B0109080166M | 螺栓M8X16 | BOLT HEX FLANGE HEAD M8X16 | 2 |
| 31 | F13 | 58260N30P000 | 左后踏蹬组件 | FOOTREST ASSY., RR., L. | 1 |
| 32 | F13 | 58280N30P000 | 右后踏蹬组件 | FOOTREST ASSY., RR., R. | 1 |
| 33 | F13 | B0101060202L | 螺栓M6×20 | BOLT HEX HEAD M6X20 | 1 |
| 34 | F13 | B04310000632 | 自锁螺母M6 | NUT M6 | 1 |
| 35 | F13 | B0703000080L | 垫圈8 | WASHER 8 | 2 |
| 36 | F13 | B01591004564 | 螺栓M10×1.25×45 | BOLT M10×1.25×45 | 4 |
| 37 | F13 | B090002018A3 | 开口销2×18 | COTTER PIN 2×18 | 1 |

F14 链罩&链轮

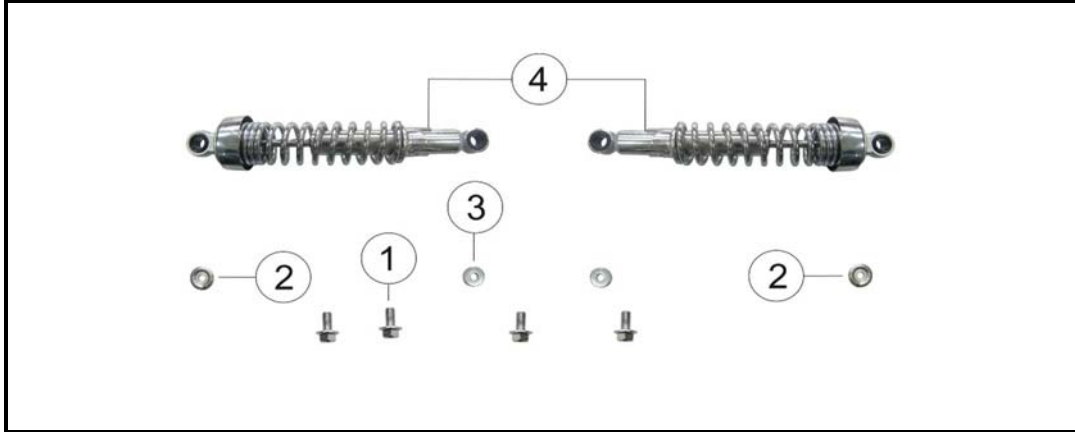
F14 CHAIN COVER&SPROCKET



| NO. | Position No. | CODE | CN DESCRIPTION | EN DESCRIPTION | Qty/Unit |
|-----|--------------|--------------|----------------|------------------------------|----------|
| 1 | F14 | B1501C1118B0 | 链条520H-1×118 | DRIVE CHAIN | 1 |
| 1 | F14 | 60100N020000 | 链罩 | CHAIN COVER | 1 |
| 2 | F14 | B0109060106L | 螺栓M6X10 | BOLT HEX FLANGE HEAD M6X10 | 3 |
| 4 | F14 | 60001N0JP000 | 链轮毂 | SPROCKET HUB | 1 |
| 5 | F14 | B12016030400 | 滚动轴承6304-2RS | BEARING 6304-2RS | 1 |
| 6 | F14 | 60006N0JP000 | 链传动轴 | SPACER | 1 |
| 7 | F14 | B04171012554 | 自锁螺母M10×1.25 | NUT HEX FLANGE LOCK M10×1.25 | 4 |
| 8 | F14 | 60015N050010 | 链轮安装螺栓 | STUD | 4 |
| 9 | F14 | 60200N0JP000 | 油封 | OIL SEAL | 1 |
| 10 | F14 | 60027N050000 | 链轮安装板 | SPROCKET COVER | 1 |
| 11 | F14 | 60002N0JP000 | 链轮 | SPROCKET | 1 |
| 12 | F14 | 60018N050000 | 链轮防尘罩 | SPROCKET HUB COVER | 1 |

F15 后减震

F15 REAR ABSORBER



| NO. | Position No. | CODE | CN DESCRIPTION | EN DESCRIPTION | Qty/Unit |
|-----|--------------|--------------|----------------|----------------------------|----------|
| 1 | F15 | B0109080166M | 螺栓M8X16 | BOLT HEX FLANGE HEAD M8X16 | 4 |
| 2 | F15 | 63014G0KP000 | 后减震上固定垫圈 | COUNTERSUNK WASHER | 2 |
| 3 | F15 | B0709000080L | 垫圈φ9×φ28×2.5 | FLAT WASHER φ9×φ28×2.5 | 2 |
| 4 | F15 | 63800N060000 | 后减震器组件 | REAR SHOCK ABSORBER | 2 |
| | | | | | |

F16前挡泥板

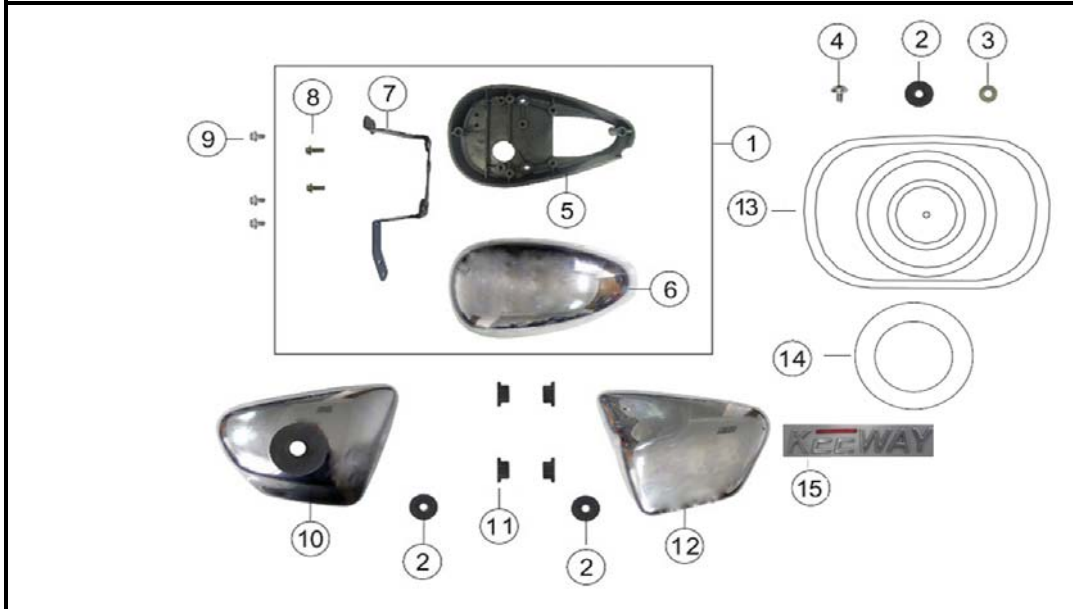
F16 FRONT FENDER



| NO. | Position No. | CODE | CN DESCRIPTION | EN DESCRIPTION | Qty/Unit |
|-----|--------------|--------------|----------------|----------------------------|----------|
| 1 | F16 | 65101K02CJ00 | 前挡泥板(四方闪银CJ) | FRONT FENDER(SILVER CJ) | 1 |
| 1 | F16 | 65101K02TT00 | 前挡泥板(四方紫红TT) | FRONT FENDER(PURPLE TT) | 1 |
| 1 | F16 | 65101K02B200 | 前挡泥板(珍珠黑B2) | FRONT FENDER(BLACK B2) | 1 |
| 2 | F16 | B0109080166M | 螺栓M8×16 | BOLT HEX FLANGE HEAD M8X16 | 4 |
| 3 | F16 | 08470N020000 | 前左反射体支架组件 | LEFT REFLECTOR SUPPORT | 1 |
| 4 | F16 | 08480N020000 | 前右反射体支架组件 | RIGHT REFLECTOR SUPPORT | 1 |
| 5 | F16 | 86300J000002 | 侧反射体组件 | REFLECTOR,FRONT SIDE | 2 |
| 6 | F16 | B10040501000 | 抽芯铆钉5×10 | PIN 5×10 | 4 |
| 7 | F16 | 65121K020010 | 前挡泥板加强板 | PLATE | 1 |
| | | | | | |

F17护板

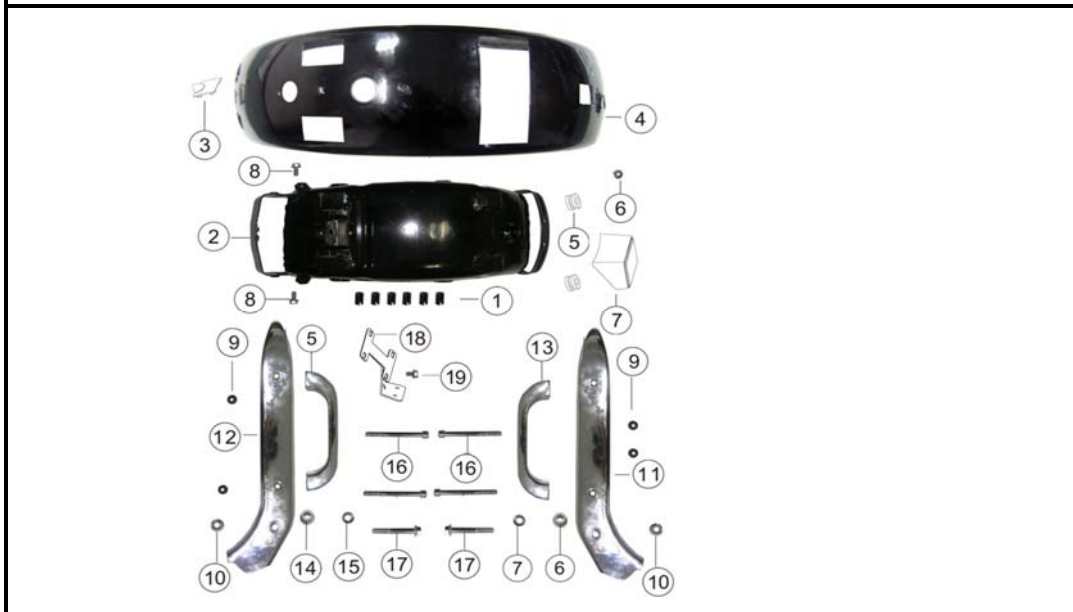
F17 FRAME COVER



| NO. | Position No. | CODE | CN DESCRIPTION | EN DESCRIPTION | Qty/Unit |
|-----|--------------|--------------|----------------|---------------------------------|----------|
| 1 | F17 | 49700N0JP00A | 装饰件组件 | LEFT DECORATIVE COVER SET | 1 |
| 2 | F17 | 65616N0HP000 | 护板橡胶垫丙 | RUBBER CUSHION | 3 |
| 3 | F17 | B0702000060L | 垫圈6 | FLAT WASHER 6 | 1 |
| 4 | F17 | 58305N050000 | 螺栓M6X12 | BOLT PAN ALLEN HEAD M6X12 | 1 |
| 5 | F17 | 49702N020000 | 装饰盖底座 | LEFT DECORATIVE COVER CRANKCASE | 1 |
| 6 | F17 | 49701N0HP000 | 装饰盖 | DECORATIVE COVER | 1 |
| 7 | F17 | 49710N0JP00A | 安装座组件 | DECORATIVE COVER SUPPORT | 1 |
| 8 | F17 | B01070602065 | 螺栓M6X20 | BOLT HEX FLANGE HEAD M6X20 | 2 |
| 9 | F17 | B0109060126L | 螺栓M6X12 | BOLT HEX FLANGE HEAD M6X12 | 3 |
| 10 | F17 | 65602N02CJ00 | 右护板(四方闪银CJ) | RIGHT SIDE COVER (SILVER CJ) | 1 |
| 10 | F17 | 65602N02TT00 | 右护板(四方紫红TT) | RIGHT SIDE COVER (PURPLE TT) | 1 |
| 10 | F17 | 65602N02B200 | 右护板(珍珠黑B2) | RIGHT SIDE COVER (BLACK B2) | 1 |
| 11 | F17 | 65618N0HP000 | 固定橡皮 | RUBBER CUSHION | 4 |
| 12 | F17 | 65601N02CJ00 | 左护板(四方闪银CJ) | LEFT SIDE COVER (SILVER CJ) | 1 |
| 12 | F17 | 65601N02TT00 | 左护板(四方紫红TT) | LEFT SIDE COVER(PURPLE TT) | 1 |
| 12 | F17 | 65601N02B200 | 左护板(珍珠黑B2) | LEFT SIDE COVER(BLACK B2) | 1 |
| 13 | F17 | 05320N050001 | 装饰盖组件 | DECORATIVE COVER | 1 |
| 14 | F17 | 05597N050000 | 发动机装饰盖铝标牌 | LABEL,DECORATIVE COVER | 1 |
| 15 | F17 | 05511J800000 | 护板标牌 | KEEWAY LABEL | 2 |

F18后挡泥板

F18 REAR FENDER



| NO. | Position No. | CODE | CN DESCRIPTION | EN DESCRIPTION | Qty/Unit |
|-----|--------------|--------------|----------------|----------------------------------|----------|
| 1 | F18 | 65704N050002 | 后泥板缓冲垫 | RUBBER CUSHION | 6 |
| 2 | F18 | 65720N0LP000 | 后挡泥板支架 | REAR FENDER SUPPORT | 1 |
| 3 | F18 | 65723N0JP000 | 后泥板接线盖 | PLASTIC CAP | 1 |
| 4 | F18 | 65701N07CJ00 | 后挡泥板(四方闪银CJ) | REAR FENDER (silver CJ) | 1 |
| 4 | F18 | 65701N07TT00 | 后挡泥板(四方紫色TT) | REAR FENDER (purple TT) | 1 |
| 4 | F18 | 65701N07B200 | 后挡泥板(珍珠黑B2) | REAR FENDER (black B2) | 1 |
| 5 | F18 | 43904K230000 | 橡胶套 | RUBBER CUSHION | 2 |
| 6 | F18 | B04070600053 | 螺母M6 | NUT HEX FLANGE M6 | 1 |
| 7 | F18 | 86500N0LP000 | 后反射体组件 | REFLECTOR | 1 |
| 8 | F18 | B0109060256L | 螺栓M8X20 | BOLT HEX FLANGE HEAD M8X20 | 2 |
| 9 | F18 | B0407080005L | 螺母M8 | NUT HEX FLANGE LOCK M8 | 4 |
| 10 | F18 | B04181012554 | 螺母M10X1.25 | NUT HEX FLANGE LOCK M10 | 2 |
| 11 | F18 | 65950N0LP00A | 后挡泥板左装饰条 | LEFT SUPPORT, REAR HANDLEBAR | 1 |
| 12 | F18 | 65960N0LP00A | 后挡泥板右装饰条 | RIGHT SUPPORT, REAR HANDLEBAR | 1 |
| 13 | F18 | 65971N0LP000 | 后扶手 | REAR HANDLEBAR | 2 |
| 14 | F18 | 08305K020010 | 衬套 | SPACER | 2 |
| 15 | F18 | B07030001000 | 垫圈φ10 | FLAT WASHER | 2 |
| 16 | F18 | B02050808064 | 内六角螺钉M8×80 | BOLT ALLEN HEAD M8X80 | 4 |
| 17 | F18 | B01091006864 | 螺栓M10×1.25×68 | BOLT HEX FLANGE HEAD M10×1.25×68 | 2 |
| 18 | F18 | 08250N070000 | 后牌照支架组件 | LICENSE PLATE | 1 |
| 19 | F18 | B0109060126L | 螺栓M6×12 | BOLT M6×12 | 1 |

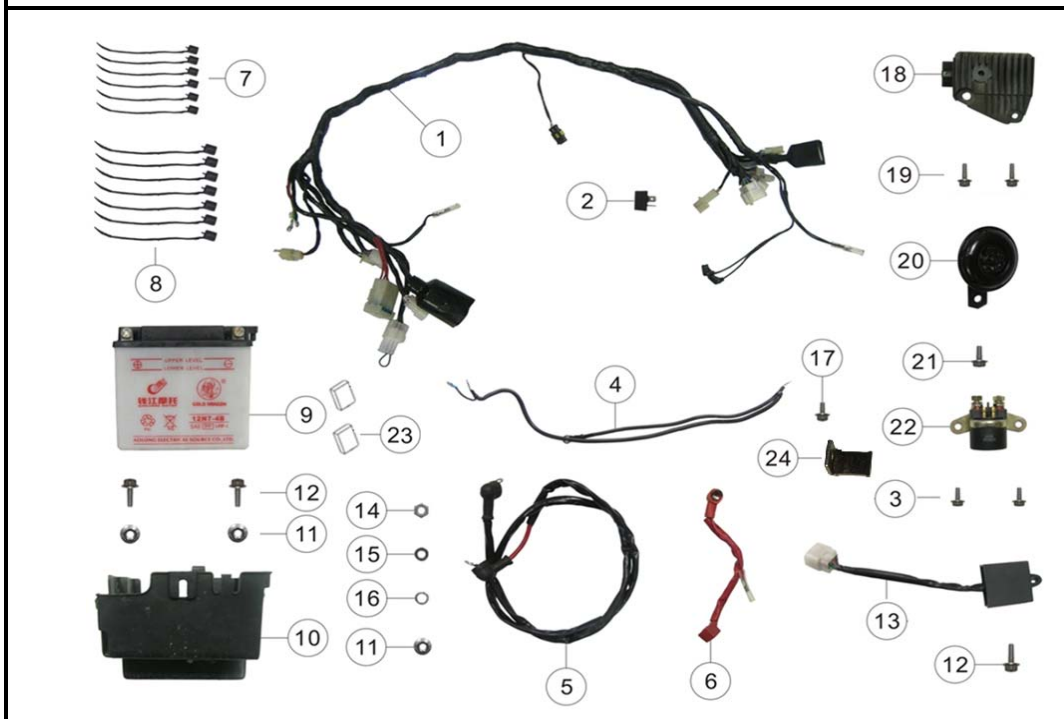
F19 HEAD LIGHT&SPEEDOMETER



| NO. | Position No. | CODE | CN DESCRIPTION | EN DESCRIPTION | Qty/Unit |
|-----|--------------|--------------|---------------------|--------------------------------|----------|
| 1 | F19 | 80000N070002 | 前照灯 (防水插件) | HEADLIGHT ASSY,with waterproof | 1 |
| 2 | F19 | 80008N050000 | 前照灯灯框(电镀) | RIM, HEADLIGHT | 1 |
| 3 | F19 | 80020N030000 | 250J前照灯后壳胶垫 | RUBBER CUSHION | 1 |
| 4 | F19 | B0109060556L | 螺栓M6×55 | BOLT HEX FLANGE HEAD M6X55 | 2 |
| 5 | F19 | B0407060005L | 螺母M6 | NUT HEX FLANGE M6 | 2 |
| 6 | F19 | 80005N050001 | QJ250J前照灯反光碗(PC、新) | INNER COVER, HEADLIGHT | 1 |
| 7 | F19 | 80016K110000 | 150-3B新前照灯后壳(电镀) | OUTER COVER, HEADLIGHT | 1 |
| 8 | F19 | B24013120000 | 12V5W楔形 | BULB LAMP (12V, 5W) | 1 |
| 9 | F19 | 80102N070001 | 前照灯灯头线 | HEADLIGHT BULB SOCKET | 1 |
| 10 | F19 | B240103200F0 | 12V35/35W三角盘卤钨(欧司朗) | BULB LAMP (12V, 35/35W) | 1 |
| 11 | F19 | 80039B470000 | QJ50QT-29D卡簧固定件(镀锌) | PLATE | 1 |
| 12 | F19 | 80152T480001 | QJ125T-30A卡簧压板(不锈钢) | PLATE | 1 |
| 13 | F19 | 70000N060005 | 仪表总成 | SPEEDOMETER | 1 |
| 13 | F19 | 70000N07000A | 仪表总成 | SPEEDOMETER | 1 |
| 14 | F19 | B0109060166L | 螺栓M6×16 | BOLT HEX FLANGE HEAD M6X16 | 2 |
| | | | | | |

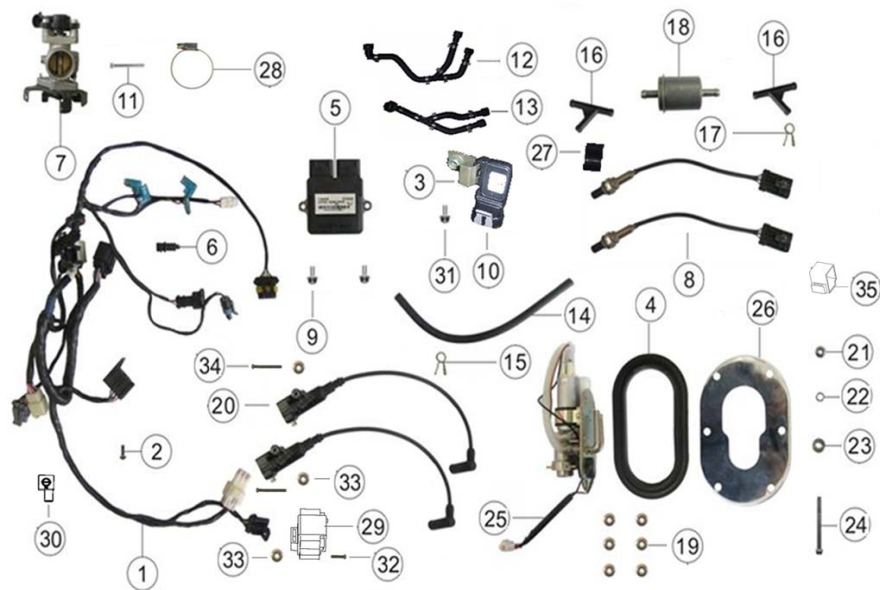
F20 电扇I

F20 ELECTRIC I



| NO. | Position No. | CODE | CN DESCRIPTION | EN DESCRIPTION | Qty/Unit |
|-----|--------------|--------------|----------------|----------------------------|----------|
| 1 | F20 | 92050N070009 | 主电缆线 | MAIN CABLE | 1 |
| 2 | F20 | 96700K060000 | 启动二极管 | DIODE | 1 |
| 3 | F20 | B0109060106L | 螺栓M6X10 | BOLT HEX FLANGE HEAD M6X10 | 2 |
| 4 | F20 | 96900N0HP000 | 搭铁线 | LEAD WIRE, BATTERY (-) | 1 |
| 5 | F20 | 92900N0HP000 | 马达线 | LEAD WIRE | 1 |
| 6 | F20 | 92200J070000 | 电源线 | LEAD WIRE, BATTERY (+) | 1 |
| 7 | F20 | 96002N0HP000 | 绑带200mm | NYLON BAND | 6 |
| 8 | F20 | 96003J000000 | 绑带250mm | NYLON BAND | 7 |
| 9 | F20 | 96100J00P000 | 蓄电池 | BATTERY | 1 |
| 10 | F20 | 65816N0HP000 | 蓄电池盒 | BATTERY SUPPORT | 1 |
| 11 | F20 | B0407060005L | 螺母M6 | NUT HEX FLANGE M6 | 2 |
| 12 | F20 | B0109060166L | 螺栓M6×16 | BOLT HEX FLANGE HEAD M6X16 | 2 |
| 13 | F20 | 96400N070001 | 闪光器 | FLASHER | 1 |
| 14 | F20 | B0400060005L | 螺母M6 | NUT HEX M6 | 1 |
| 15 | F20 | B0700000060L | 弹簧垫圈6 | FLAT WASHER 6 | 1 |
| 16 | F20 | B0703000060L | 垫圈6 | SPRING WASHER 6 | 1 |
| 17 | F20 | B0109060106L | 螺栓M6X10 | BOLT HEX FLANGE HEAD M6X10 | 1 |
| 18 | F20 | 98801N04FN04 | 稳压器 | RECTIFIER REGULATOR | 1 |
| 19 | F20 | B0109060166L | 螺栓M6×16 | BOLT HEX FLANGE HEAD M6X16 | 2 |
| 20 | F20 | 95100G120001 | 喇叭 | HORN | 1 |
| 21 | F20 | B0109080166M | 螺栓M8X16 | BOLT HEX FLANGE HEAD M8X16 | 1 |
| 22 | F20 | 94100BS0T000 | 启动继电器 | START RELAY SET | 1 |
| 23 | F20 | 58752J00000A | 蓄电池海绵垫 | CUSHION,BATTERY | 2 |
| 24 | F20 | 57471N070000 | 防侧翻继电器支架 | BRACKET | 1 |

F21 ELECTRIC II



| NO. | Position No. | CODE | CN DESCRIPTION | EN DESCRIPTION | Qty/Unit |
|-----|--------------|--------------|----------------|-------------------------------------|----------|
| 1 | F21 | 92070N070009 | 电喷电线电缆 | EFI ELECTRIC WIRE | 1 |
| 2 | F21 | B02000501625 | 螺钉M5X12 | BOLT PAN PHILIPS HEAD M5X12 | 1 |
| 3 | F21 | 96911T430000 | 压力传感器安装板 | BRACKE,PRESSURE SENSOR | 1 |
| 4 | F21 | 50417N070000 | 橡胶密封圈 | FUEL MODULE GASKET | 1 |
| 5 | F21 | 319015130000 | ECU | ELECTRONIC CONTROL UNIT | 1 |
| 6 | F21 | 310015040000 | 进气温度传感器 | INLET TEMPERATURE SENSOR | 1 |
| 7 | F21 | 280015040000 | 节气门体 | THROTTLE BODY | 1 |
| 8 | F21 | 310023160000 | 氧传感器 | OXYGEN SENSOR | 2 |
| 9 | F21 | B0109060206L | 螺栓M6X20 | BOLT HEX FLANGE HEAD M6X20 | 2 |
| 10 | F21 | 96910N120000 | 进气压力传感器 | INTAKE AIR TEMPERATURE SENSOR (MAT) | 1 |
| 11 | F21 | B01070604564 | 六角法兰面螺栓M6X45 | BOLT HEX FLANGE HEAD M6X45 | 1 |
| 12 | F21 | 50070N070000 | 油管组件I | PIPE ASSY I | 1 |
| 13 | F21 | 50080N070001 | 油管组件II | PIPE ASSY II | 1 |
| 14 | F21 | 110075130000 | MAP管 | RUBBER HOSE | 1 |
| 15 | F21 | B17010090003 | 钢丝卡箍9 | CLIP 9 | 1 |
| 16 | F21 | 3316801K0000 | 三通接头 | 3-DIRECTIONS PIPE | 2 |
| 17 | F21 | B17010105003 | 钢丝卡箍Φ10.5 | CLIP 10.5 | 8 |
| 18 | F21 | 50340N070000 | 过滤器组件 | FILTER ASSY | 1 |
| 19 | F21 | B04070600053 | 螺母M6 | NUT HEX FLANGE M6 | 6 |
| 20 | F21 | 96210N070000 | 点火线圈 | IGNITION COIL WITH CONECTOR | 2 |
| 21 | F21 | B0400060005L | 螺母M6 | NUT HEX FLANGE M6 | 1 |
| 22 | F21 | B0700000060L | 弹簧垫圈6 | SPRING WASHER 6 | 1 |
| 23 | F21 | B0703000060L | 垫圈6 | FLAT WASHER 6 | 1 |
| 24 | F21 | B01090606564 | 螺栓M6X65 | BOLT HEX FLANGE HEAD M6X65 | 1 |
| 25 | F21 | 50400N070004 | 燃油泵组件 | FUEL PUMP | 1 |
| 26 | F21 | 50182N070012 | 盖板 | FUEL PUMP MODULE COVER | 1 |
| 27 | F21 | 50391N070000 | 过滤器护套 | FILTER PROTECTIVE COVERING | 1 |
| 28 | F21 | 49016N070000 | 不锈钢卡箍50 | CLIP 50 | 2 |
| 29 | F21 | 94300N070000 | 防翻转继电器 | RELAYOR, ANTI-OVERTURN | 1 |
| 30 | F21 | 94118B910000 | 搭铁线护套 | JACKET | 1 |
| 31 | F21 | B0109060126L | 螺栓M6X12 | BOLT HEX FLANGE HEAD M6X12 | 1 |
| 32 | F21 | B0200060162L | 螺钉M6×16 | SCREW M6×16 | 1 |
| 33 | F21 | B0407060005L | 螺母M6 | NUT M6 | 3 |
| 34 | F21 | B02000607024 | 螺钉M6×70 | SCREW M6×70 | 2 |
| 35 | F21 | 98901S010000 | 传感器橡胶 | SENSOR RUBBER | 1 |

F22尾灯&转向灯

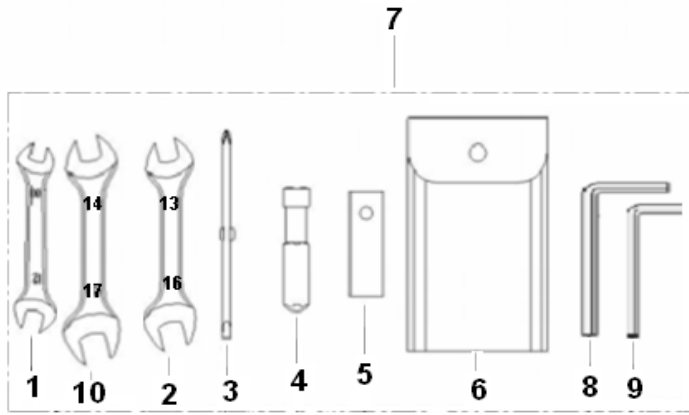
F22 TAIL LAMP&TURN SIGNAL



| NO. | Position No. | CODE | CN DESCRIPTION | EN DESCRIPTION | Qty/Unit |
|-----|--------------|--------------|----------------------------------|----------------------------------|----------|
| 1 | F22 | B0109060126L | 螺栓M6×12 | BOLT HEX FLANGE HEAD M6X12 | 2 |
| 2 | F22 | 08330N060000 | 大灯支架焊接组件 | HEADLIGHT SUPPORT | 1 |
| 3 | F22 | 82000N070001 | 后尾灯 | TAIL LAMP ASSY | 1 |
| 4 | F22 | B07030001003 | 平垫10 | FLAT WASHER 10 | 4 |
| 5 | F22 | B07000001003 | 弹簧垫圈φ10 | SPRING WASHER 10 | 4 |
| 6 | F22 | 82012K2GP001 | 250L尾灯座(电镀) | CRANKCASE I, TAIL LIGHT | 1 |
| 7 | F22 | B24012120000 | 12V10W灯泡 | BULB LAMP 12V/10W | 4 |
| 8 | F22 | B05004001005 | 自攻螺钉ST4×10 | SCREW PAN PHILIPS HEAD ST4X10 | 2 |
| 9 | F22 | 82008K2GP000 | 125-2G尾灯罩 | TAIL LAMP LENS | 1 |
| 10 | F22 | 81100N0LP000 | 前左转向灯 | TURN SIGNAL FRONT LEFT | 1 |
| 11 | F22 | 81300N0LP000 | 前右转向灯 | TURN SIGNAL FRONT RIGHT | 1 |
| 12 | F22 | 81500N0LP000 | 后左转向灯 | TURN SIGNAL REAR LEFT | 1 |
| 13 | F22 | 81700N0LP000 | 后右转向灯 | TURN SIGNAL REAR RIGHT | 1 |
| 14 | F22 | 82031N050000 | 密封条 | RUBBER SEAL | 1 |
| 15 | F22 | 82007K230000 | 150-2G尾灯底板(塑料电镀) | CRANKCASE II, TAIL LIGHT | 1 |
| 16 | F22 | 82018K230000 | 尾灯衬套 | SPACER | 2 |
| 17 | F22 | B0703000060L | 垫圈6 | FLAT WASHER | 2 |
| 18 | F22 | B0407060005L | 螺母M6 | NUT HEX FLANGE M6 | 2 |
| 19 | F22 | B240138200G0 | P21/5W 12499 12V P21 (飞利浦 进口) | BULB LAMP 12V/21/5W | 1 |

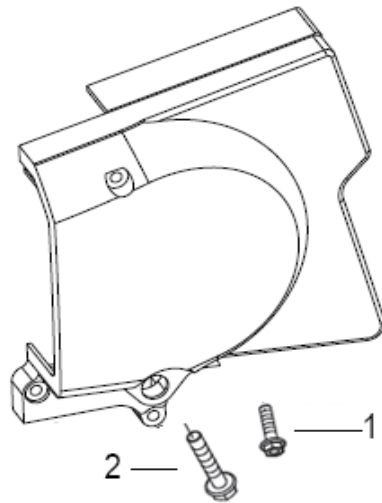
F23 随车工具

F23 TOOL KIT



| NO. | Position No. | CODE | CN DESCRIPTION | EN DESCRIPTION | Qty/Unit |
|-----|--------------|--------------|----------------|--------------------------|----------|
| 1 | F23 | B20011001203 | 双头呆扳手10-12 | WRENCH 10-12mm | 1 |
| 2 | F23 | B20011301603 | 双头呆扳手13-16 | WRENCH 13-16mm | 1 |
| 3 | F23 | 02104G00P000 | 手柄组件 | HANDLE, SCREW DRIVER | 1 |
| 4 | F23 | 02103G00P000 | 双头起子 | DRIVER, SCREW | 1 |
| 5 | F23 | 02102J000000 | 火花塞套筒 | SOCKET, SPARK PLUG | 1 |
| 6 | F23 | 02110G0BP000 | 工具袋 | TOOL BAG | 1 |
| 7 | F23 | 02100K290000 | 随车工具总成 | TOOL KIT | 1 |
| 8 | F23 | B200208000R3 | 内六角扳手8 | INNER HEXAGONAL WRENCH 8 | 1 |
| 9 | F23 | B200206000R3 | 内六角扳手6 | INNER HEXAGONAL WRENCH 6 | 1 |
| 10 | F23 | B20011401703 | 双头呆扳手14-17 | WRENCH 14-17mm | 1 |

F24 ENGINE ATTACHMENT



| NO. | Position No. | CODE | CN DESCRIPTION | EN DESCRIPTION | Qty/Unit |
|-----|--------------|--------------|----------------|----------------|----------|
| 1 | F24 | B01070602564 | 螺栓M6X25 | BOLT 6X25 | 2 |
| 2 | F24 | B01070604564 | 螺栓M6X45 | BOLT 6X45 | 1 |